

TYPE

A

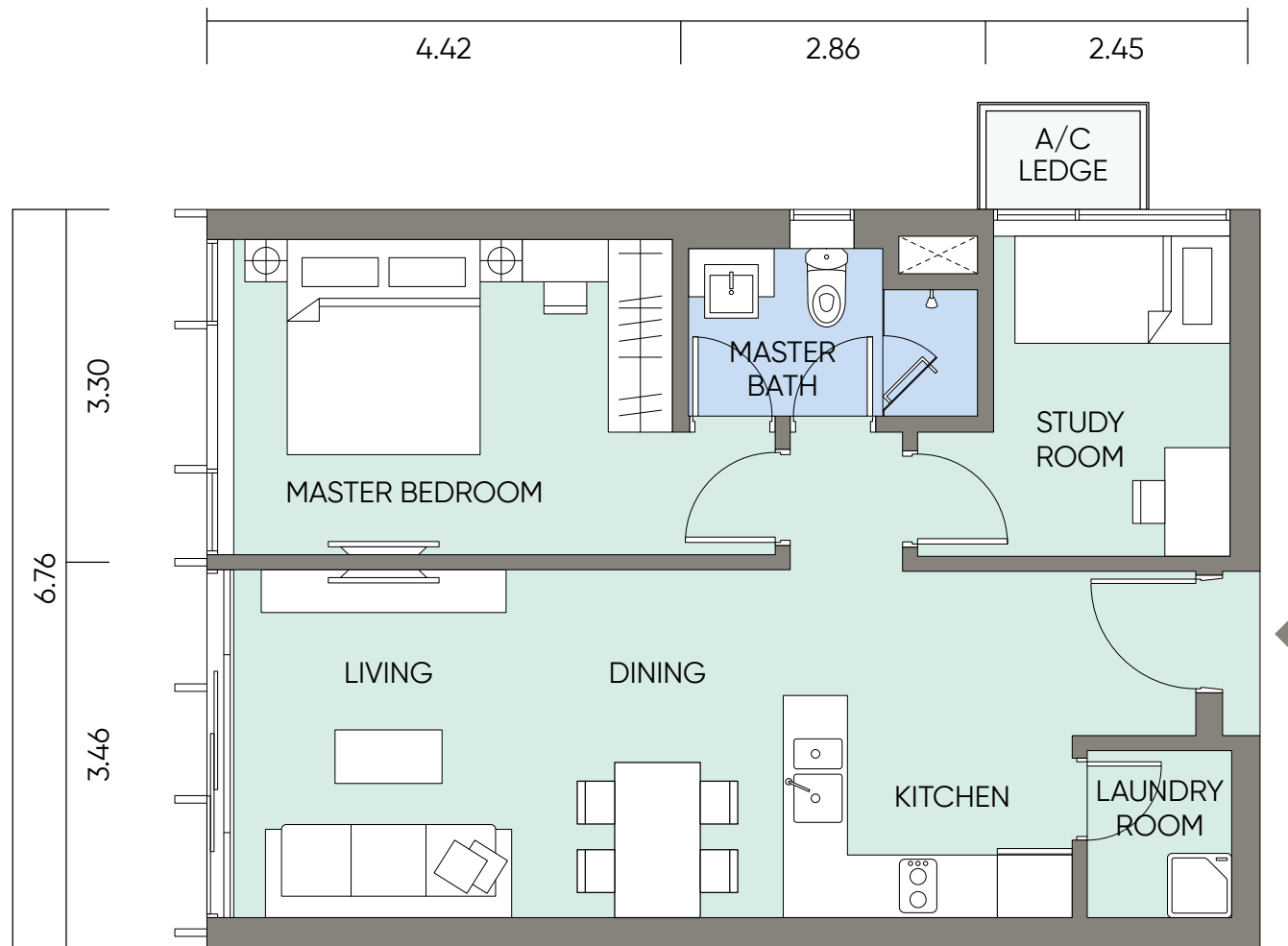
1 BEDROOM + 1





# / Type A

- 1 Bedroom
- 1 Bathroom
- 1 Study room
- 1 Laundry room



**TOTAL BUILT-UP AREA**

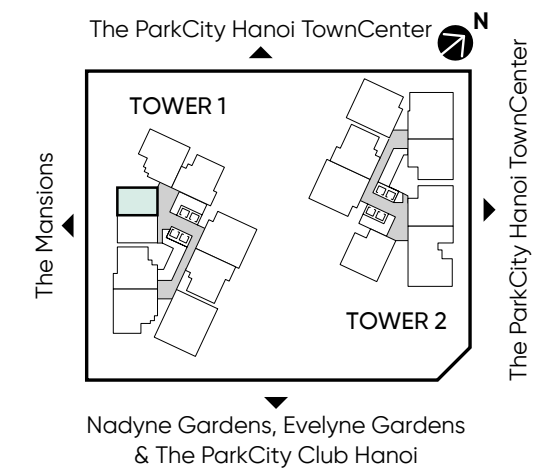
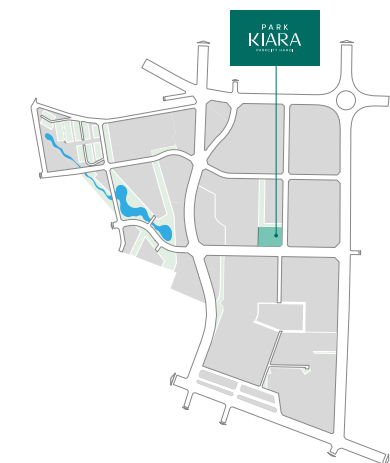
67.37 m<sup>2</sup>

**NET FLOOR AREA**

60.49 m<sup>2</sup>

**NO. OF UNIT**

24



Dimensions and floor areas are subject to further revisions. All dimensions are expressed in meters unless specified otherwise.

# / Type A(m)

- 1 Bedroom
- 1 Bathroom
- 1 Study room
- 1 Laundry room



**TOTAL BUILT-UP AREA**

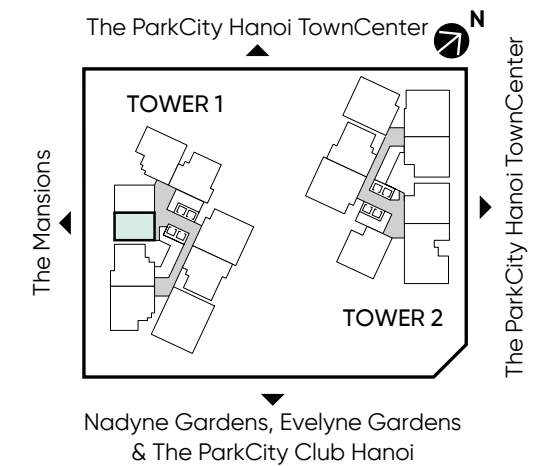
67.37 m<sup>2</sup>

**NET FLOOR AREA**

60.49 m<sup>2</sup>

**NO. OF UNIT**

24



Dimensions and floor areas are subject to further revisions. All dimensions are expressed in meters unless specified otherwise.



TYPE

B

2 BEDROOMS





# / Type B1

2 Bedrooms  
2 Bathrooms

TOTAL BUILT-UP AREA

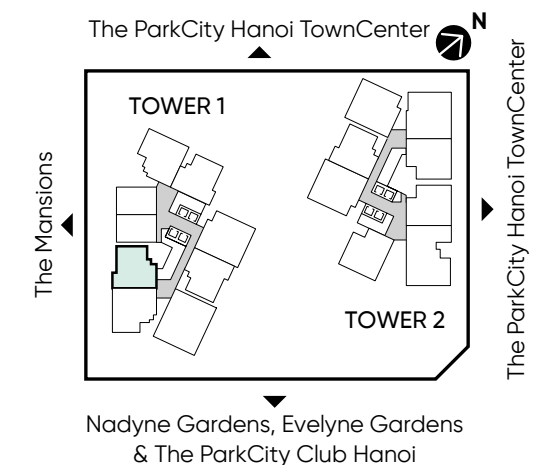
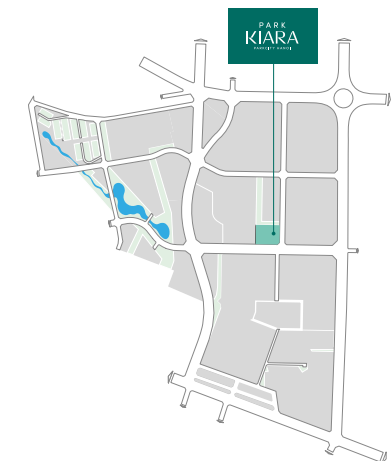
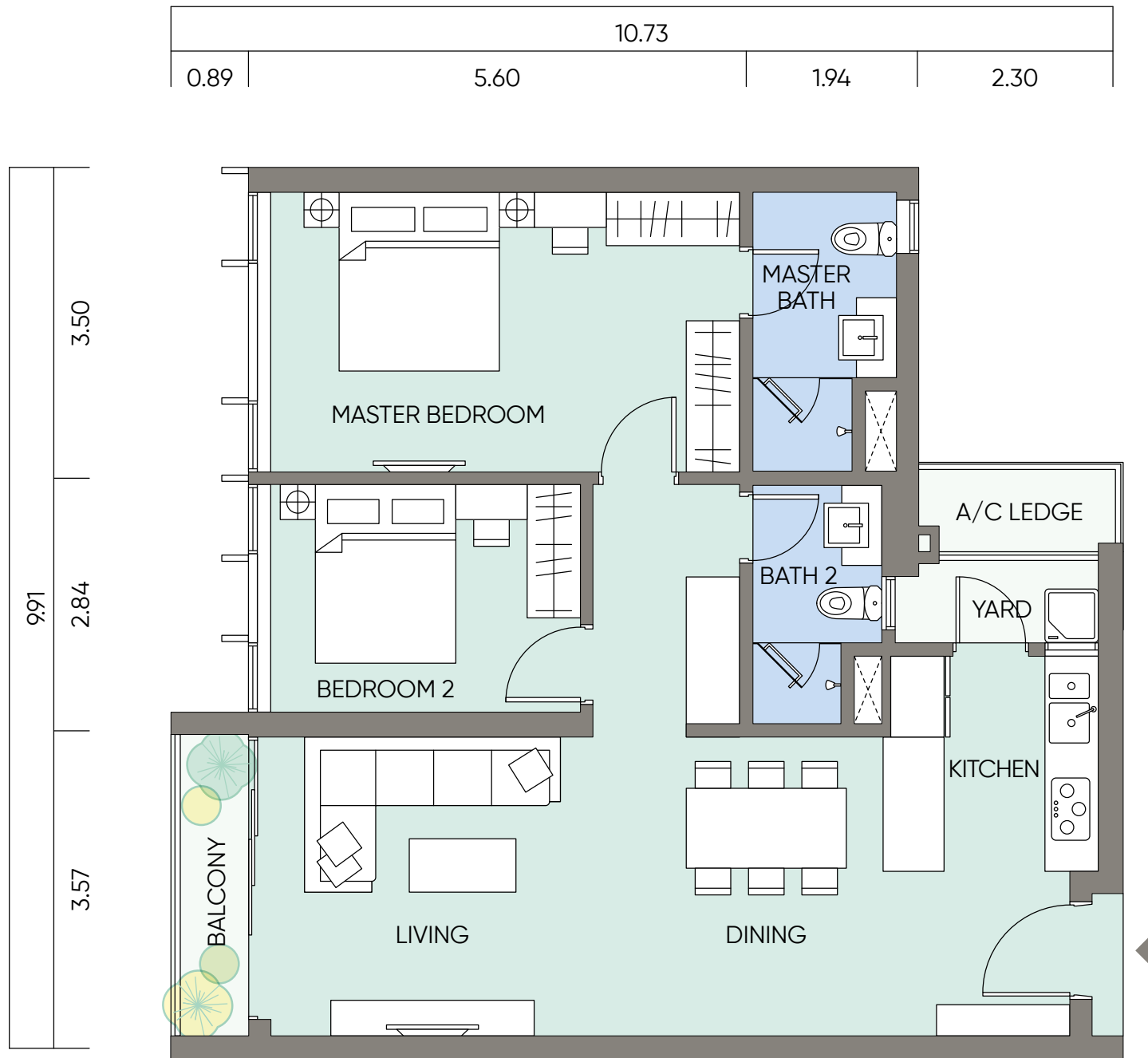
92.7 m<sup>2</sup>

NET FLOOR AREA

82.47 m<sup>2</sup>

NO. OF UNIT

24



Dimensions and floor areas are subject to further revisions. All dimensions are expressed in meters unless specified otherwise.

# / Type B1

2 Bedrooms  
2 Bathrooms

TOTAL BUILT-UP AREA

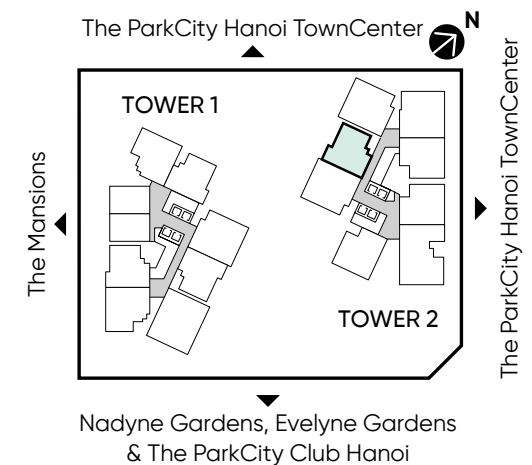
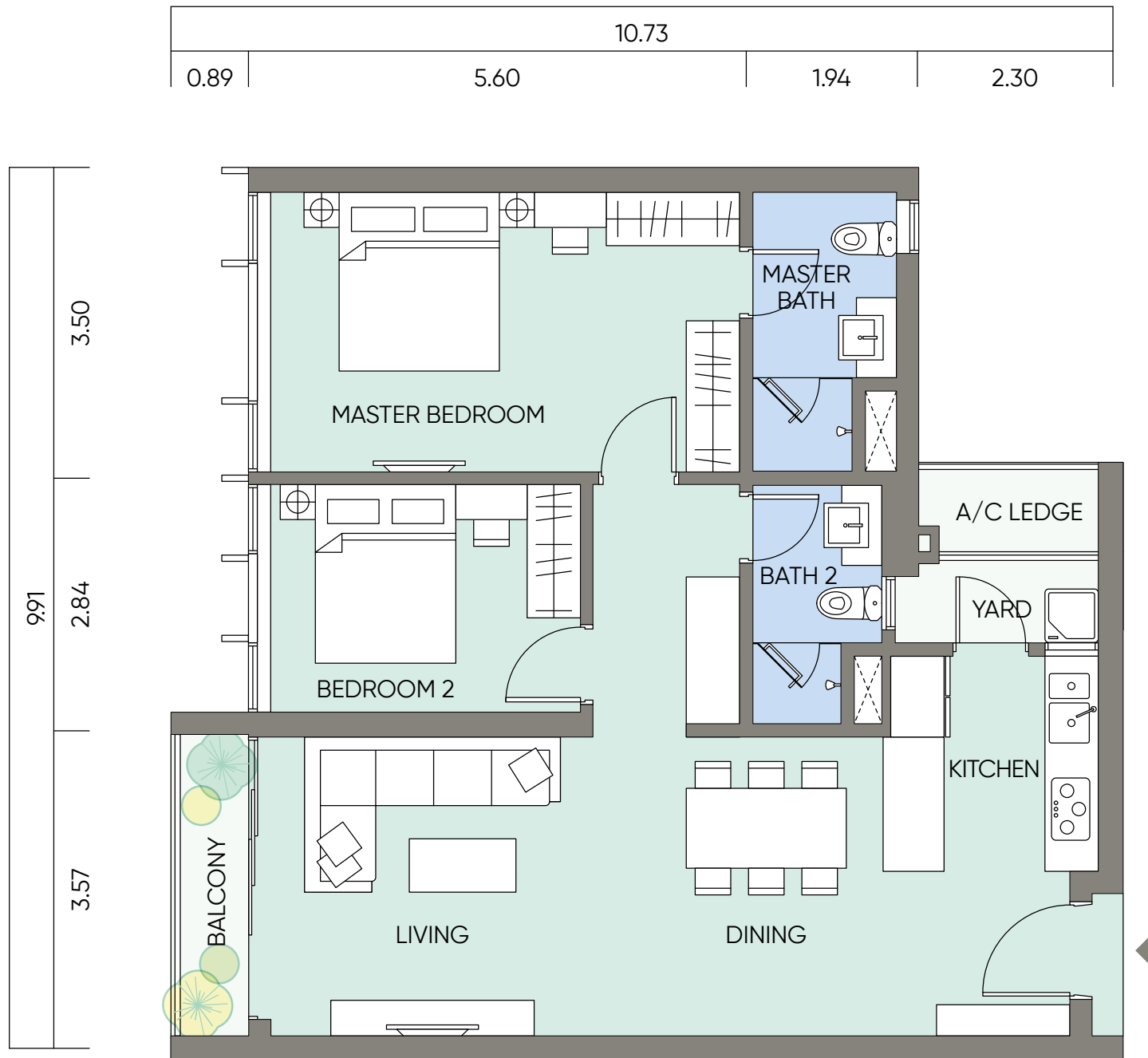
92.46 m<sup>2</sup>

NET FLOOR AREA

82.01 m<sup>2</sup>

NO. OF UNIT

25



Dimensions and floor areas are subject to further revisions. All dimensions are expressed in meters unless specified otherwise.

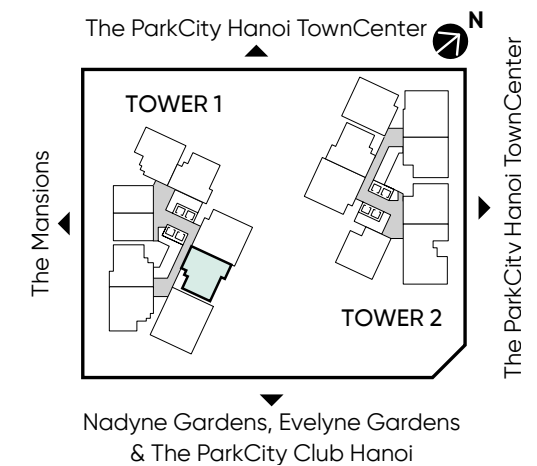
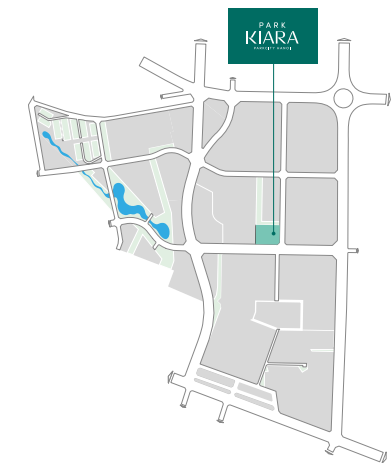
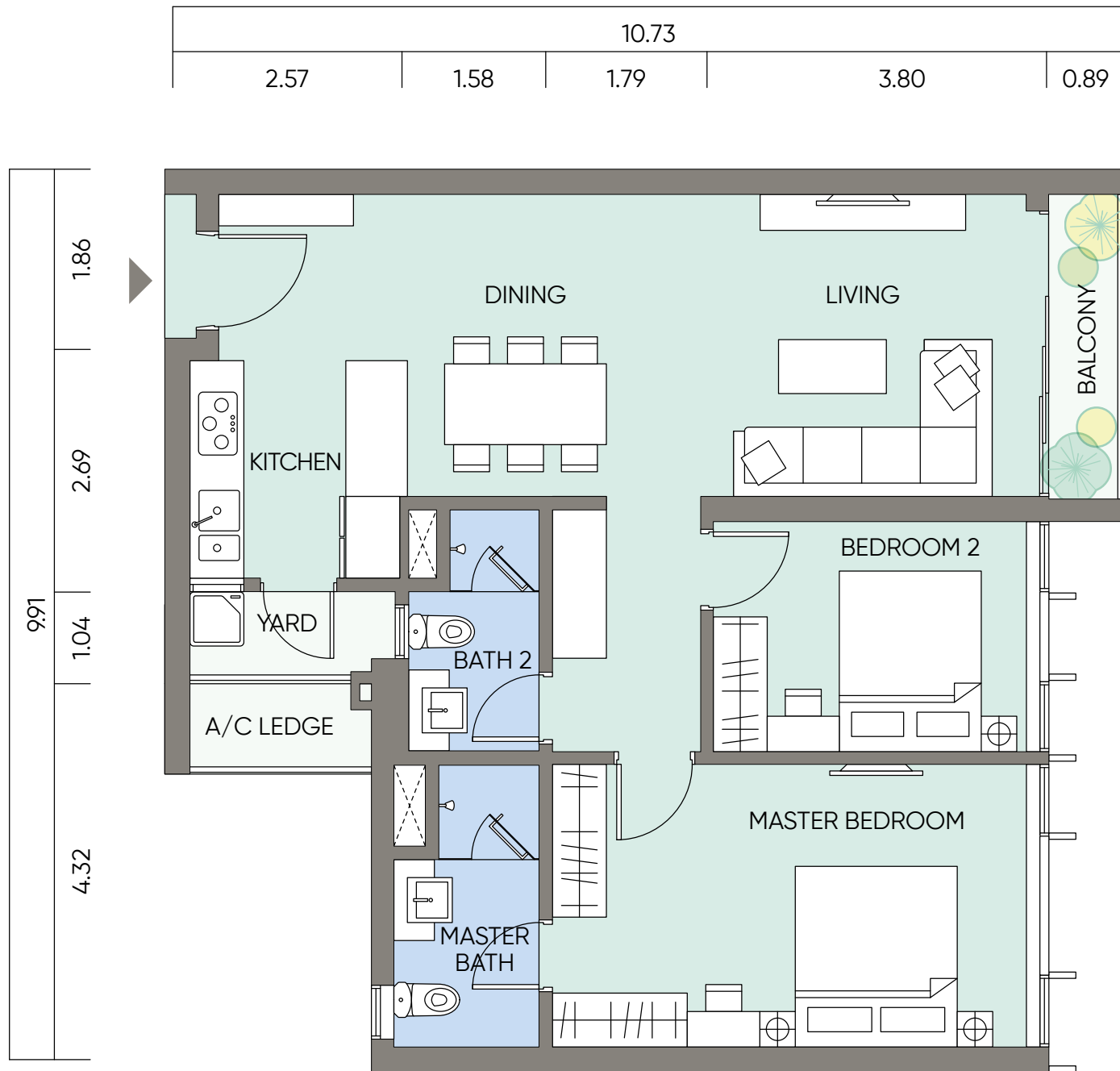
# / Type B1

2 Bedrooms  
2 Bathrooms

TOTAL BUILT-UP AREA  
92.46 m<sup>2</sup>

NET FLOOR AREA  
82.01 m<sup>2</sup>

NO. OF UNIT  
25



Dimensions and floor areas are subject to further revisions. All dimensions are expressed in meters unless specified otherwise.

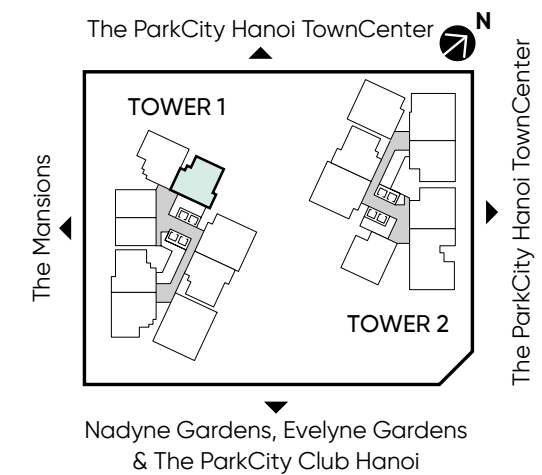
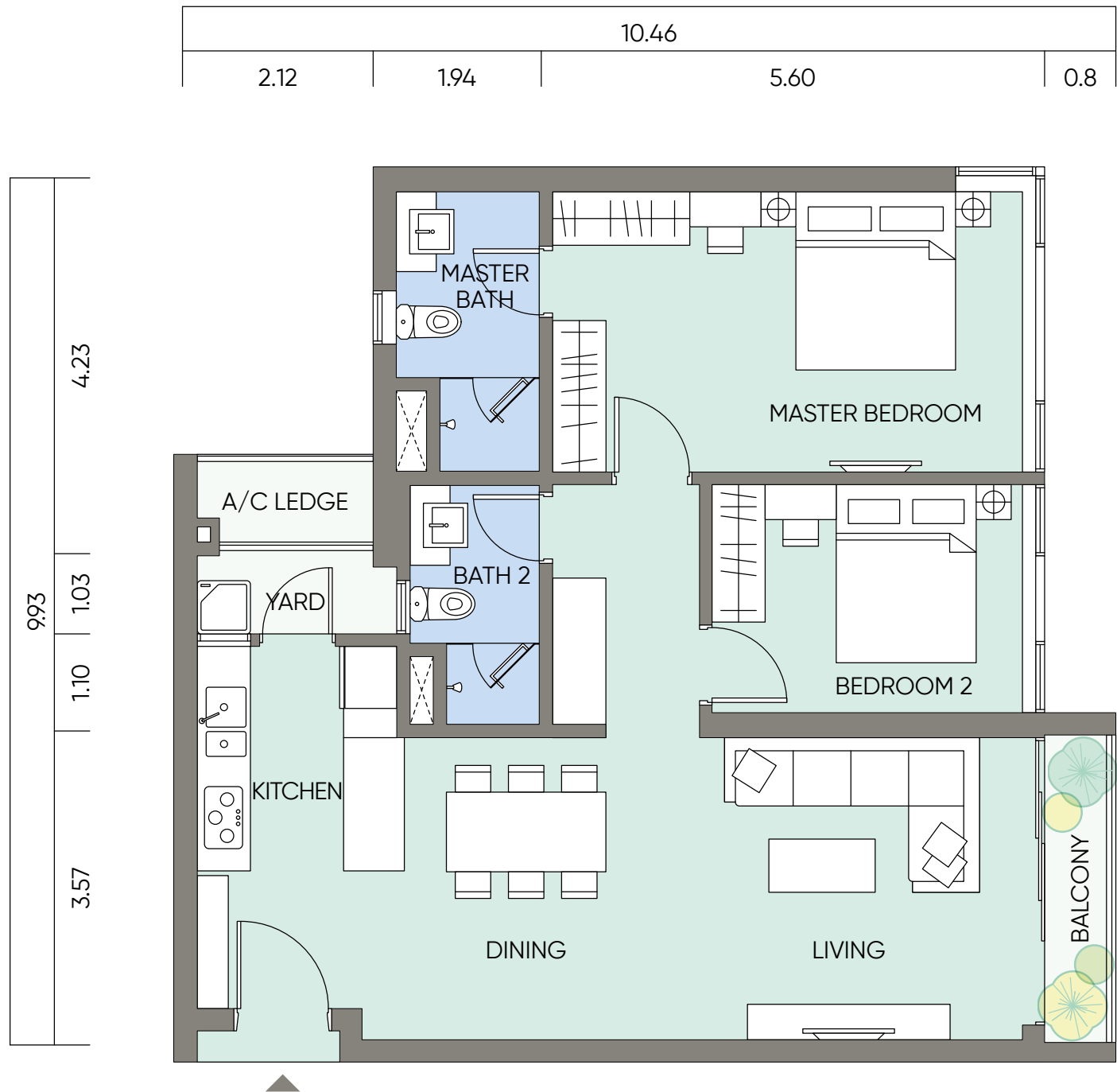
# / Type B2

2 Bedrooms  
2 Bathrooms

**TOTAL BUILT-UP AREA**  
92.44 m<sup>2</sup>

**NET FLOOR AREA**  
81.83 m<sup>2</sup>

**NO. OF UNIT**  
25



Dimensions and floor areas are subject to further revisions. All dimensions are expressed in meters unless specified otherwise.



TYPE

C

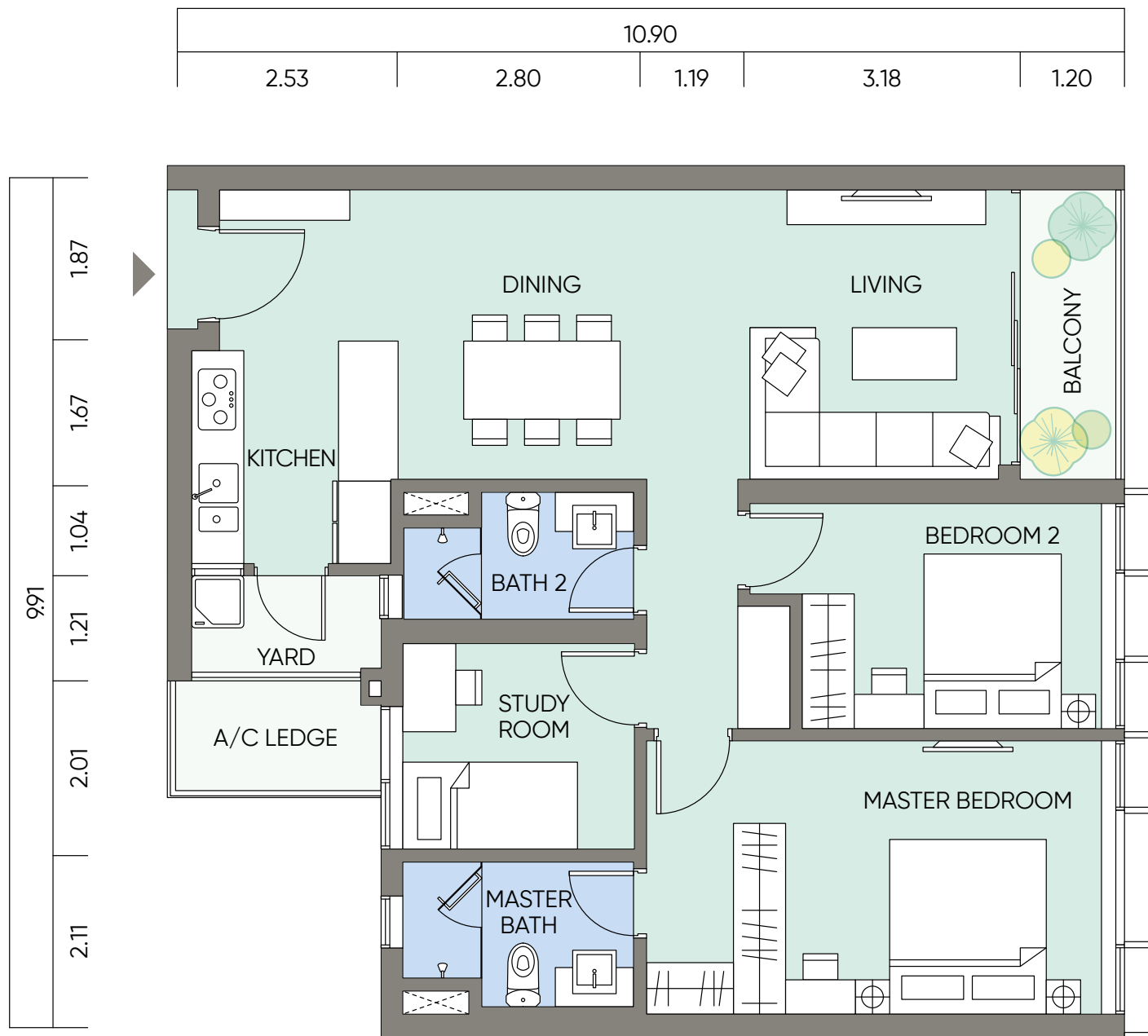
2 BEDROOMS + 1





# / Type C1

- 2 Bedrooms
- 2 Bathrooms
- 1 Study room



**TOTAL BUILT-UP AREA**

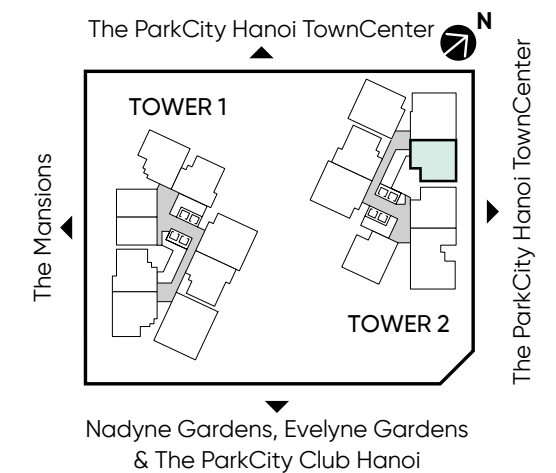
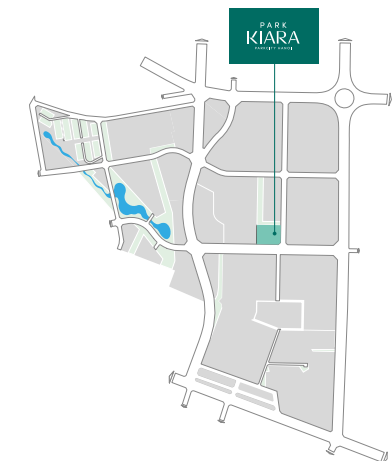
101.79 m<sup>2</sup>

**NET FLOOR AREA**

90.53 m<sup>2</sup>

**NO. OF UNIT**

25



Dimensions and floor areas are subject to further revisions. All dimensions are expressed in meters unless specified otherwise.



# / Type C1

2 Bedrooms  
2 Bathrooms  
1 Study room

**TOTAL BUILT-UP AREA**

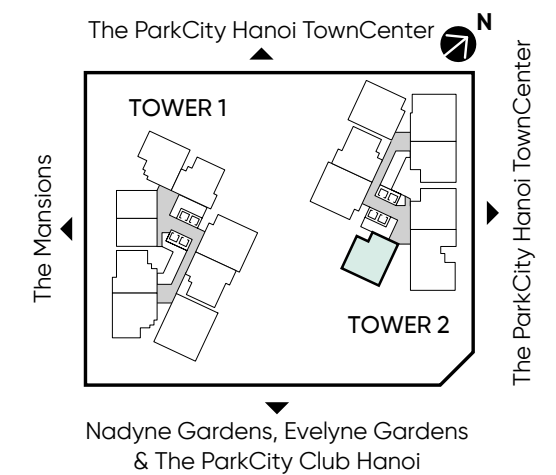
103.15 m<sup>2</sup>

**NET FLOOR AREA**

90.22 m<sup>2</sup>

**NO. OF UNIT**

25



Dimensions and floor areas are subject to further revisions. All dimensions are expressed in meters unless specified otherwise.

# / Type C1(m)

- 2 Bedrooms
- 2 Bathrooms
- 1 Study room

**TOTAL BUILT-UP AREA**

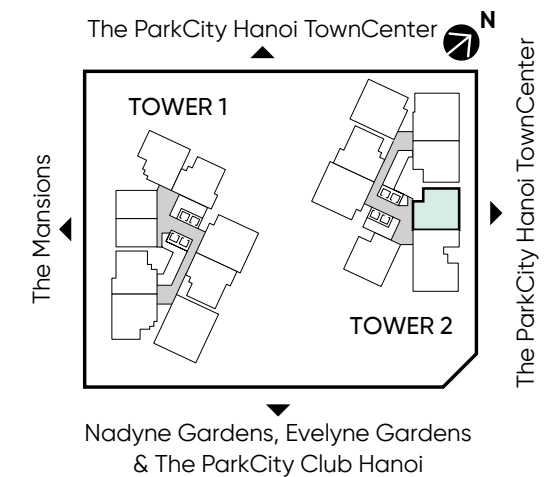
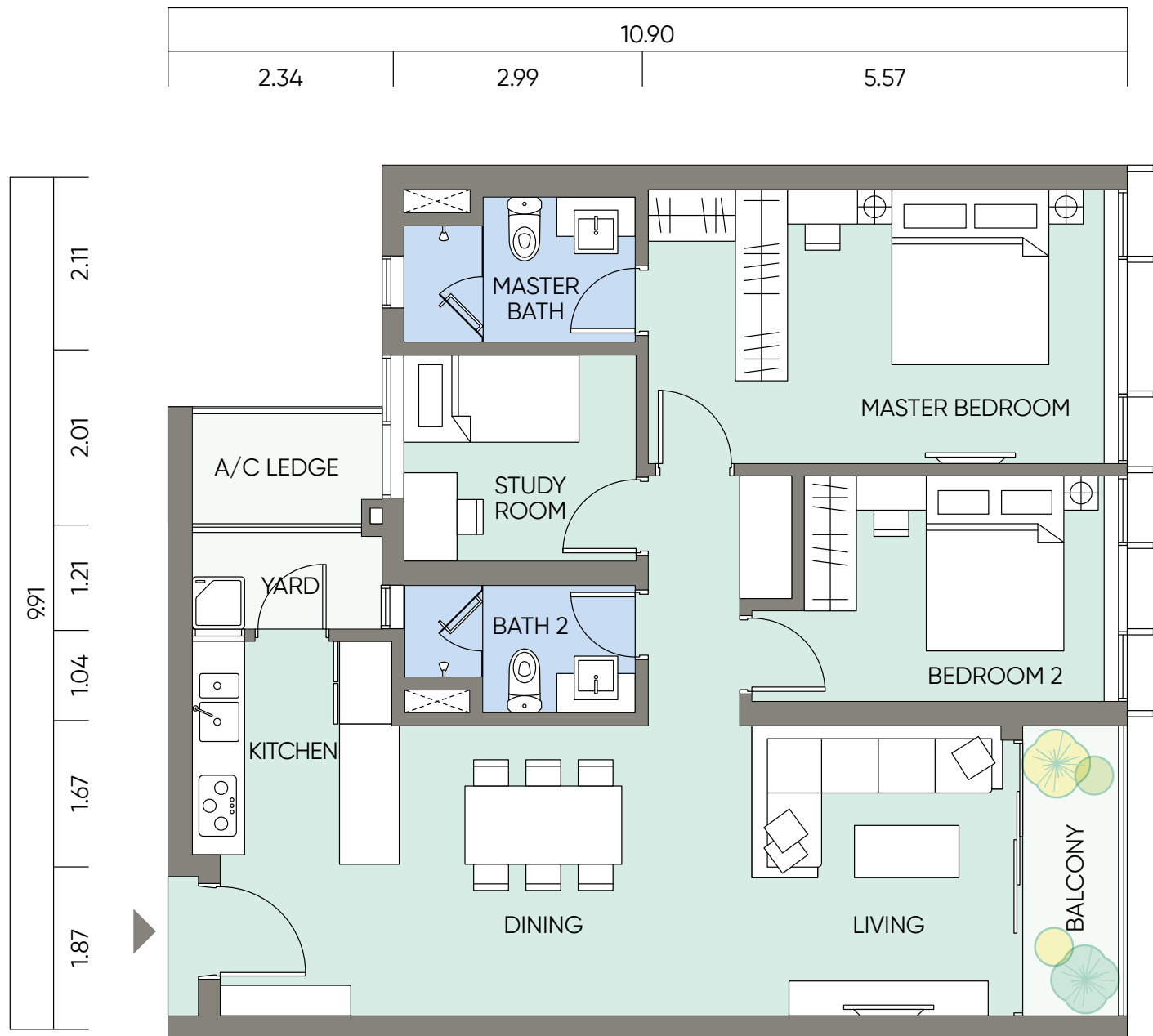
101.45 m<sup>2</sup>

**NET FLOOR AREA**

90.12 m<sup>2</sup>

**NO. OF UNIT**

24



Dimensions and floor areas are subject to further revisions. All dimensions are expressed in meters unless specified otherwise.



# / Type C2

2 Bedrooms  
2 Bathrooms  
1 Study room

**TOTAL BUILT-UP AREA**

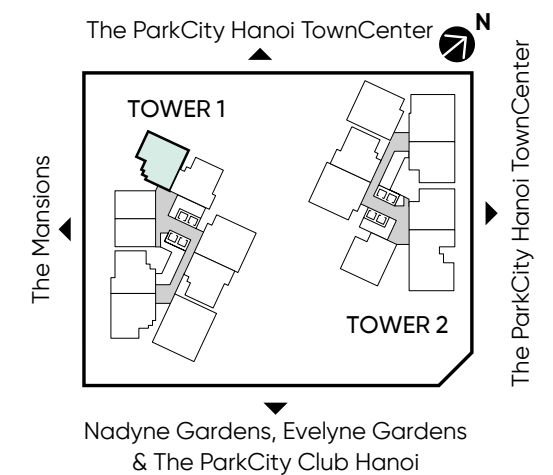
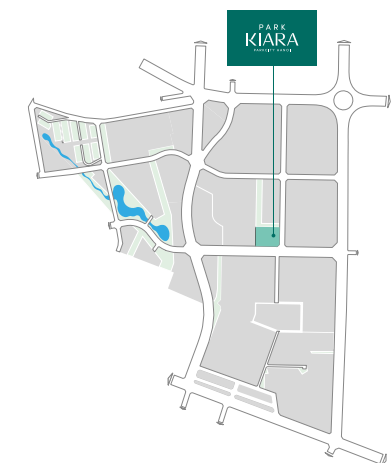
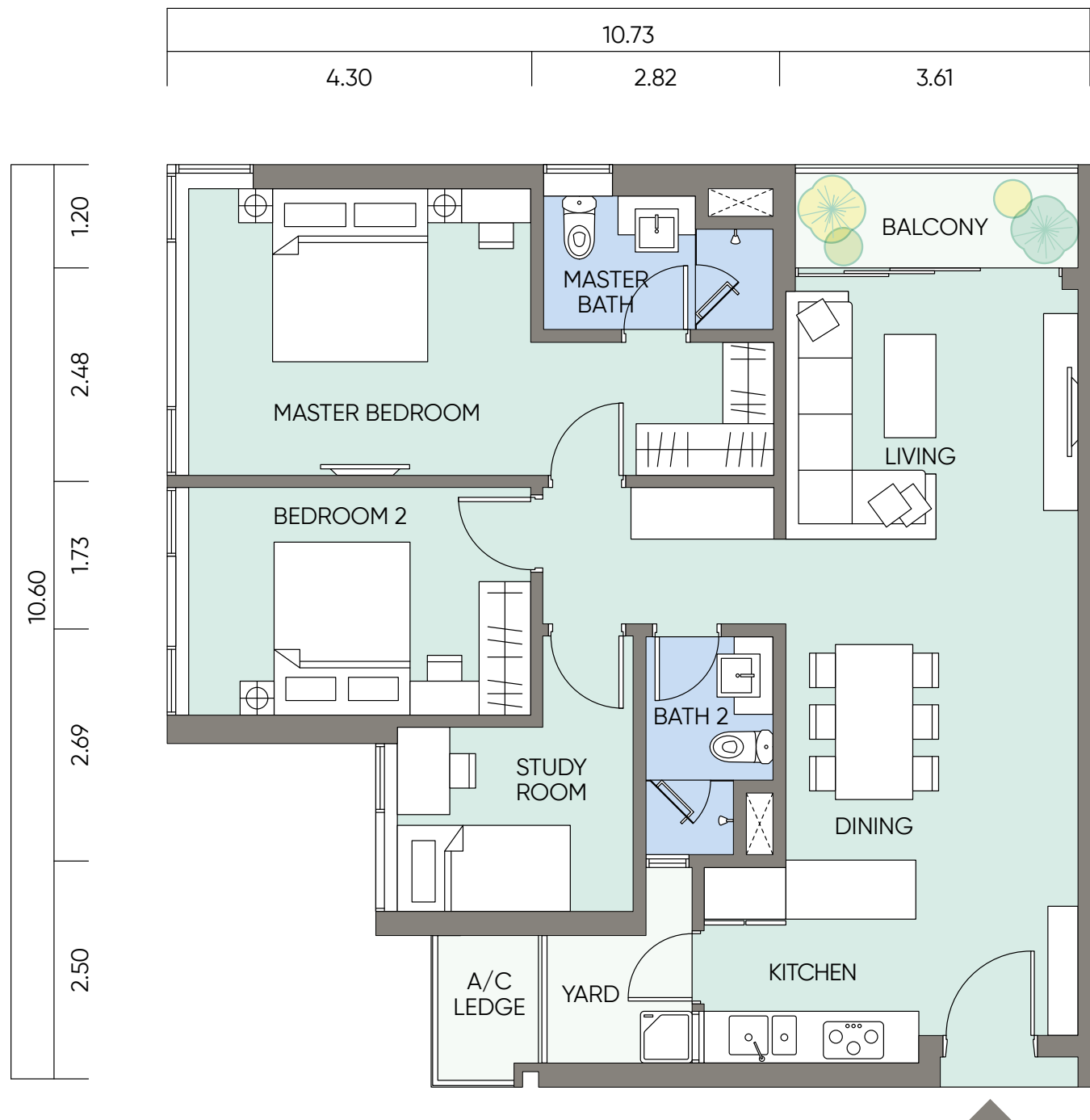
104.52 m<sup>2</sup>

**NET FLOOR AREA**

92.99 m<sup>2</sup>

**NO. OF UNIT**

25



Dimensions and floor areas are subject to further revisions. All dimensions are expressed in meters unless specified otherwise.

# / Type C2

2 Bedrooms  
2 Bathrooms  
1 Study room

TOTAL BUILT-UP AREA

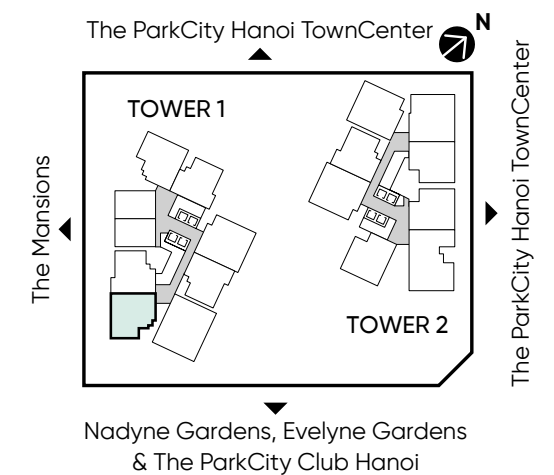
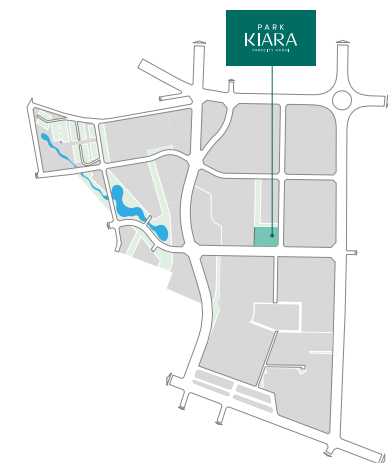
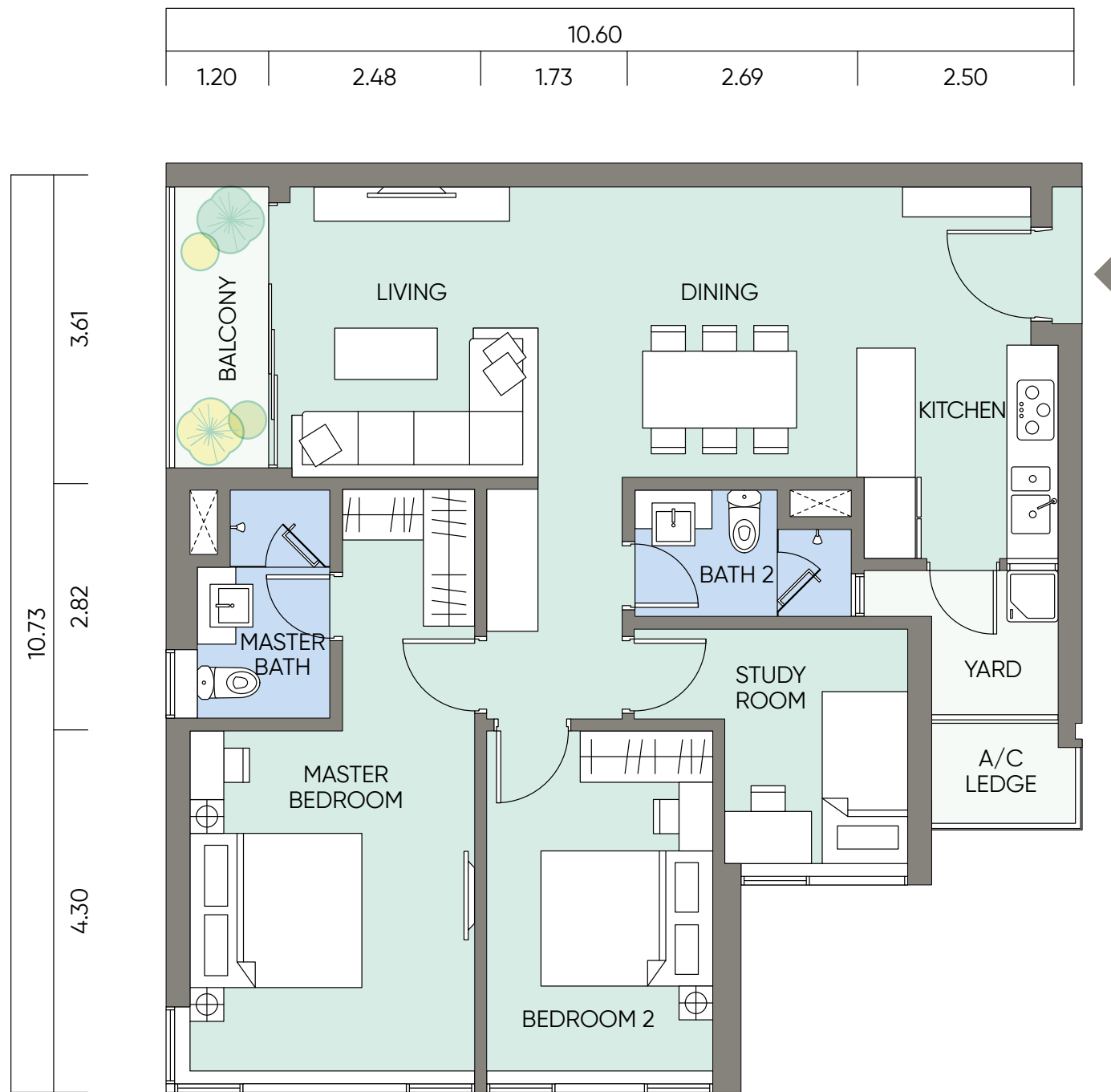
104 m<sup>2</sup>

NET FLOOR AREA

92.99 m<sup>2</sup>

NO. OF UNIT

25

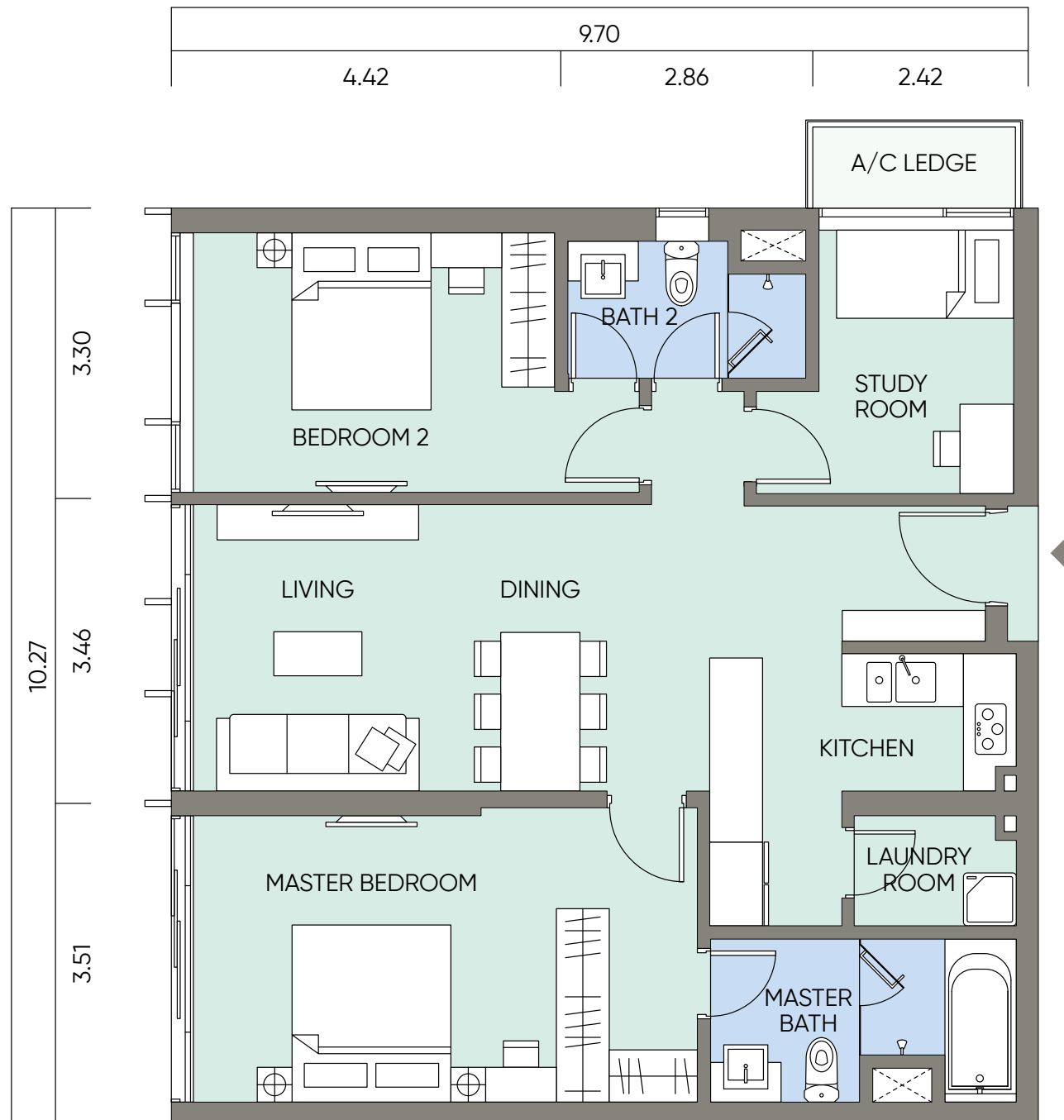


Dimensions and floor areas are subject to further revisions. All dimensions are expressed in meters unless specified otherwise.



# / Type C3

- 2 Bedrooms
- 2 Bathrooms
- 1 Study room
- 1 Laundry room



**TOTAL BUILT-UP AREA**

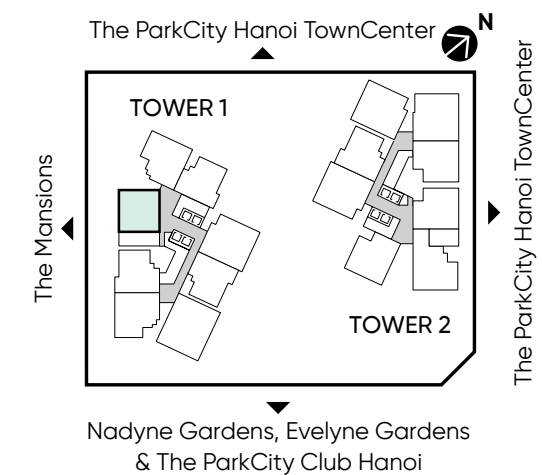
103.57 m<sup>2</sup>

**NET FLOOR AREA**

92.63 m<sup>2</sup>

**NO. OF UNIT**

1



*Dimensions and floor areas are subject to further revisions. All dimensions are expressed in meters unless specified otherwise.*

# / Type C4

- 2 Bedrooms
- 2 Bathrooms
- 1 Study room

**TOTAL BUILT-UP AREA**

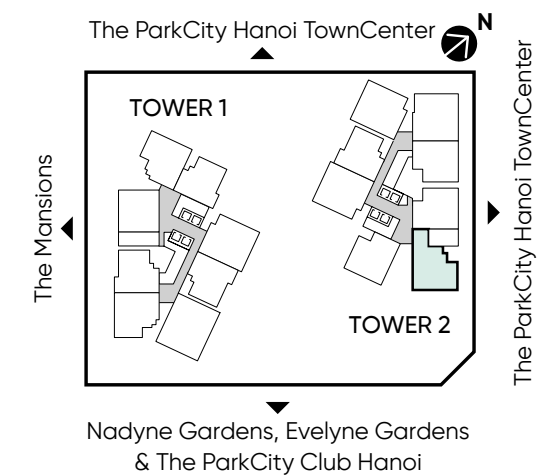
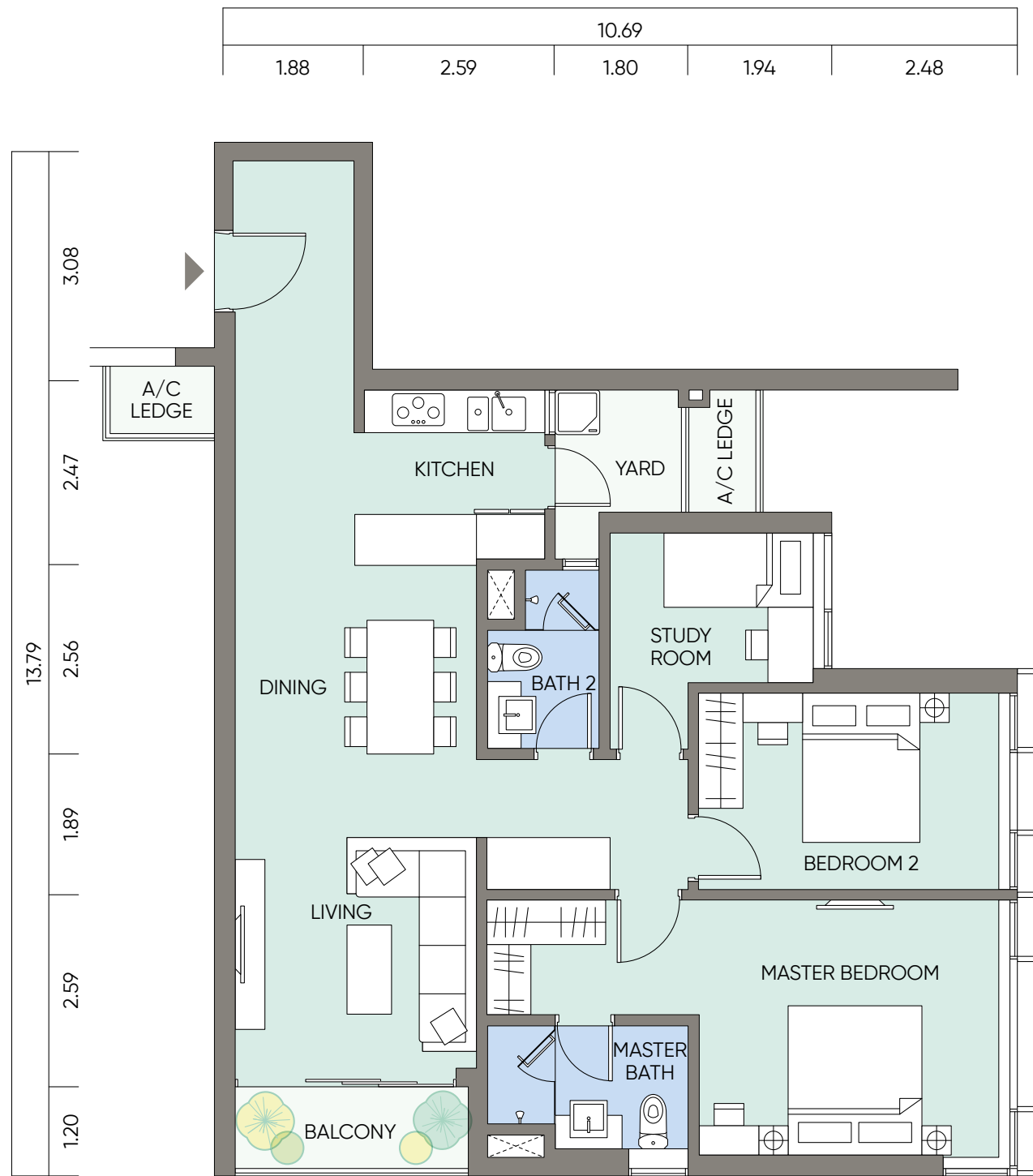
110.45 m<sup>2</sup>

**NET FLOOR AREA**

99.4 m<sup>2</sup>

**NO. OF UNIT**

1



Dimensions and floor areas are subject to further revisions. All dimensions are expressed in meters unless specified otherwise.



TYPE

D

3 BEDROOMS





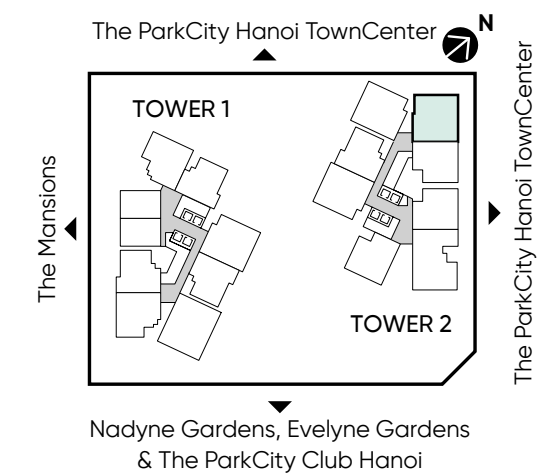
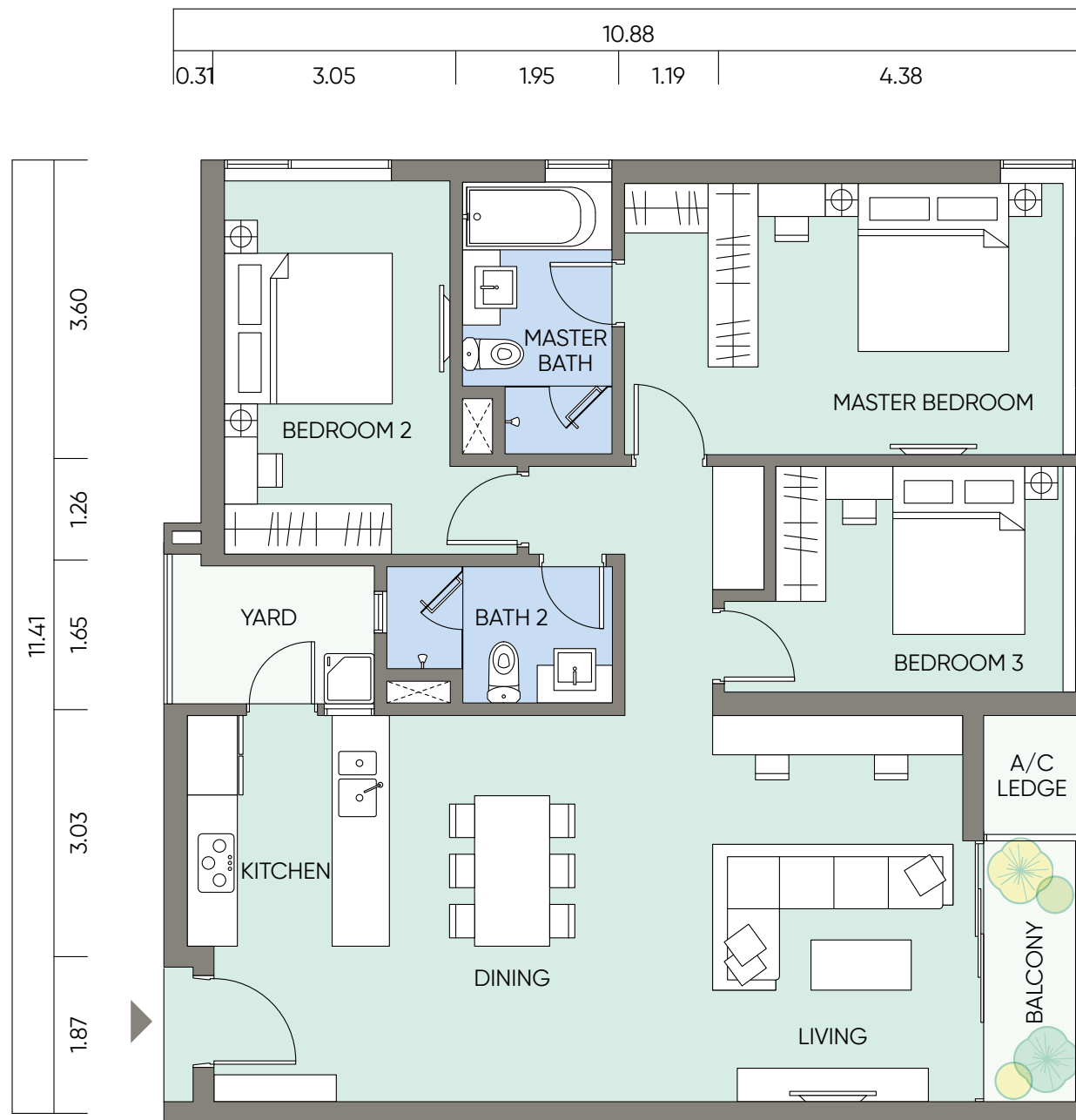
# / Type D1

3 Bedrooms  
2 Bathrooms

TOTAL BUILT-UP AREA  
123.54 m<sup>2</sup>

NET FLOOR AREA  
111.41 m<sup>2</sup>

NO. OF UNIT  
25



Due to the windows sizes for different floor might be different for the same stack or unit type.  
Windows in Master Bedroom & Bedroom 3: Level 5-22: 1.8m height, level 23-29: 2.3m height.  
Dimensions and floor areas are subject to further revisions. All dimensions are expressed in meters unless specified otherwise.



# / Type D2

3 Bedrooms  
2 Bathrooms

**TOTAL BUILT-UP AREA**

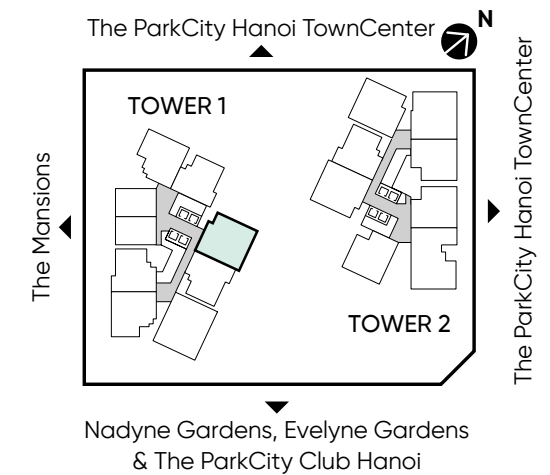
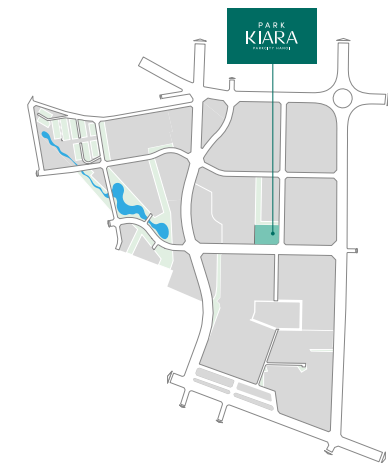
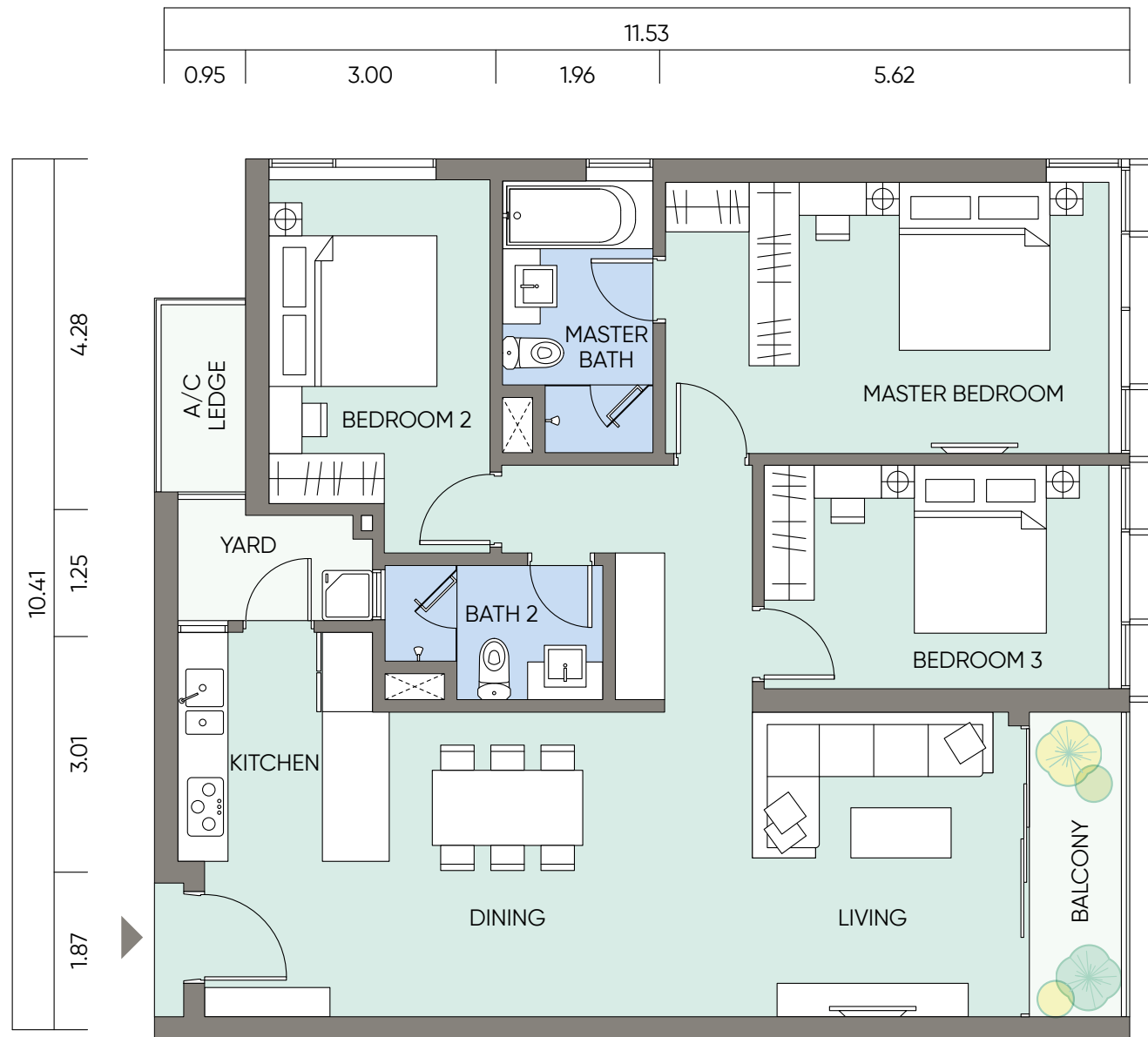
119.22 m<sup>2</sup>

**NET FLOOR AREA**

107.66 m<sup>2</sup>

**NO. OF UNIT**

22



*Due to the windows sizes for different floor might be different for the same stack or unit type.  
Windows in Master Bedroom & Bedroom 3: Level 5-22: 1.8m height, level 26-29: 2.3m height.  
Dimensions and floor areas are subject to further revisions. All dimensions are expressed in meters unless specified otherwise.*

# / Type D2

**3 Bedrooms**  
**2 Bathrooms**

**TOTAL BUILT-UP AREA**

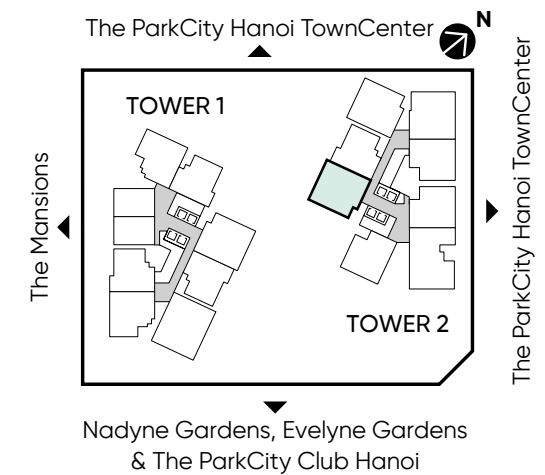
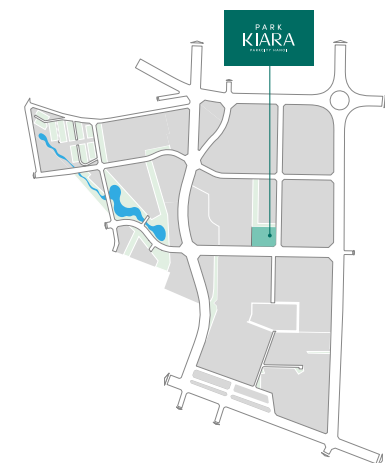
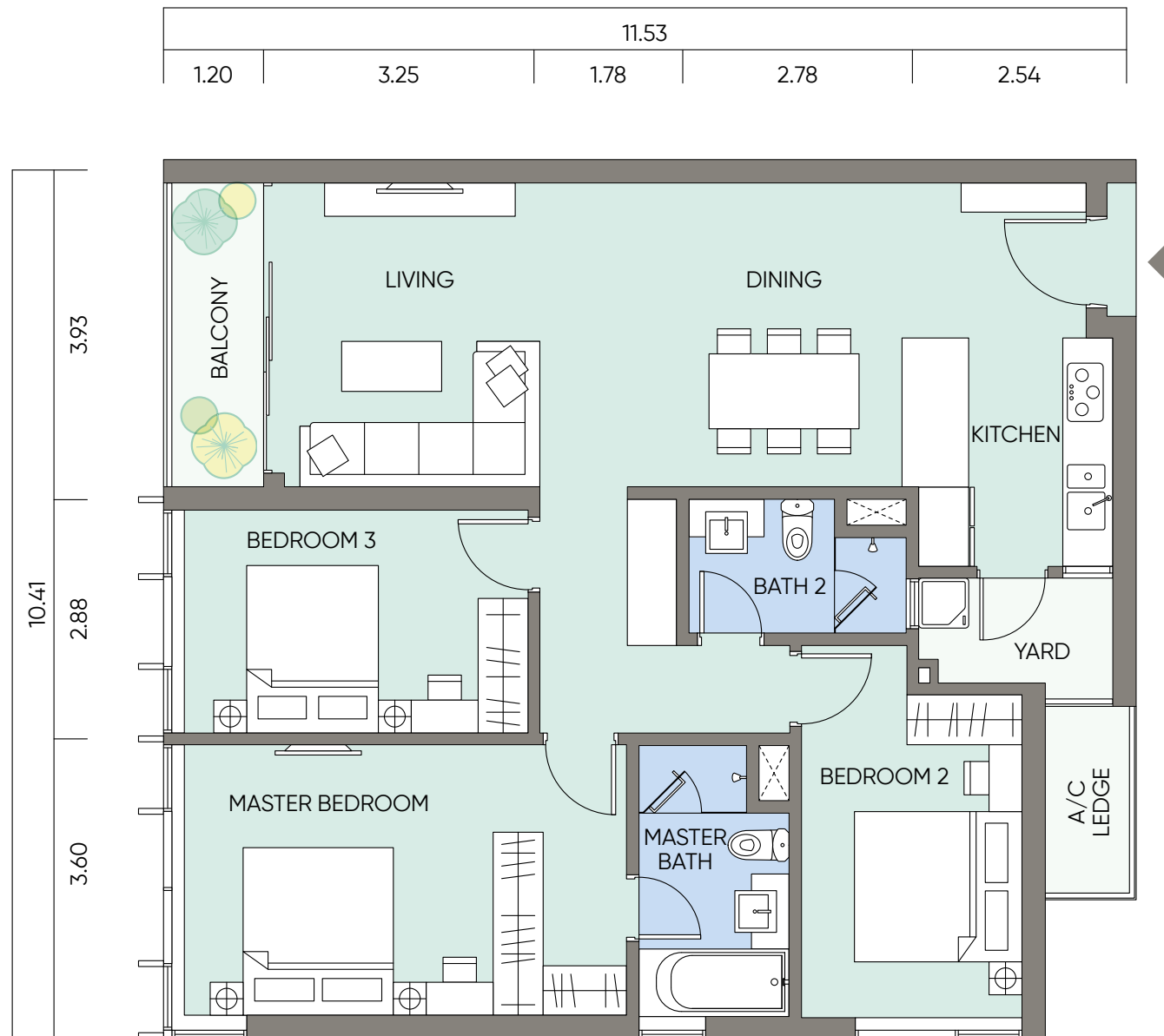
119.22 m<sup>2</sup>

**NET FLOOR AREA**

107.66 m<sup>2</sup>

**NO. OF UNIT**

22



*Due to the windows sizes for different floor might be different for the same stack or unit type.  
Windows in Master Bedroom & Bedroom 3: Level 5-12: 2.3m height, level 16-29: 1.8m height.  
Dimensions and floor areas are subject to further revisions. All dimensions are expressed in meters unless specified otherwise.*

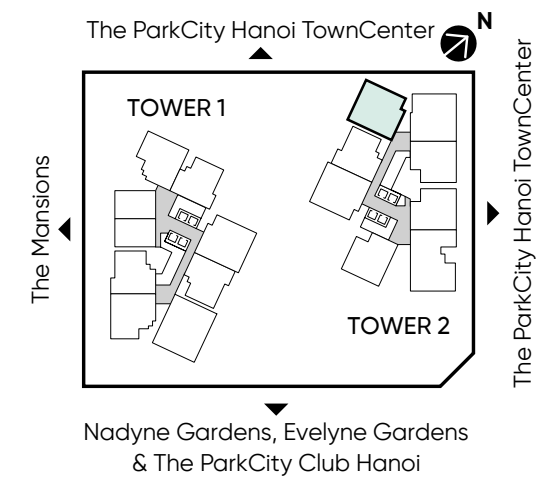
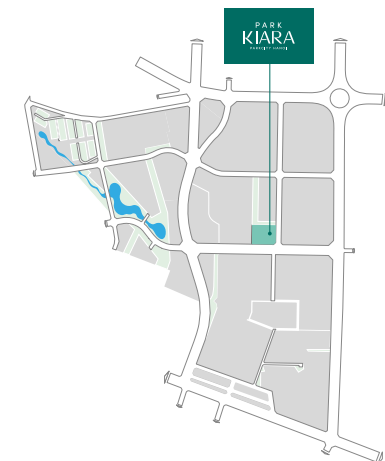
# / Type D2(m)

**3 Bedrooms**  
**2 Bathrooms**

**TOTAL BUILT-UP AREA**  
121.11 m<sup>2</sup>

**NET FLOOR AREA**  
107.92 m<sup>2</sup>

**NO. OF UNIT**  
25



*Due to the windows sizes for different floor might be different for the same stack or unit type.  
Windows in Master Bedroom & Bedroom 3: Level 5-22: 1.8m height, level 23-29: 2.3m height.  
Dimensions and floor areas are subject to further revisions. All dimensions are expressed in meters unless specified otherwise.*



TYPE

E

3 BEDROOMS + 1





# / Type E

- 3 Bedrooms
- 2 Bathrooms
- 1 Study room

**TOTAL BUILT-UP AREA**

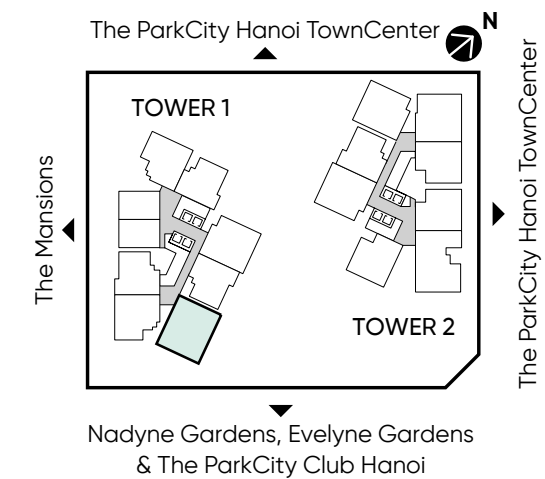
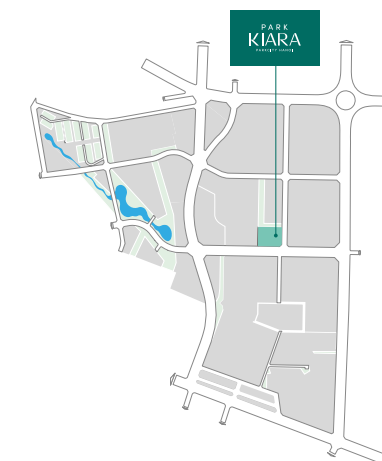
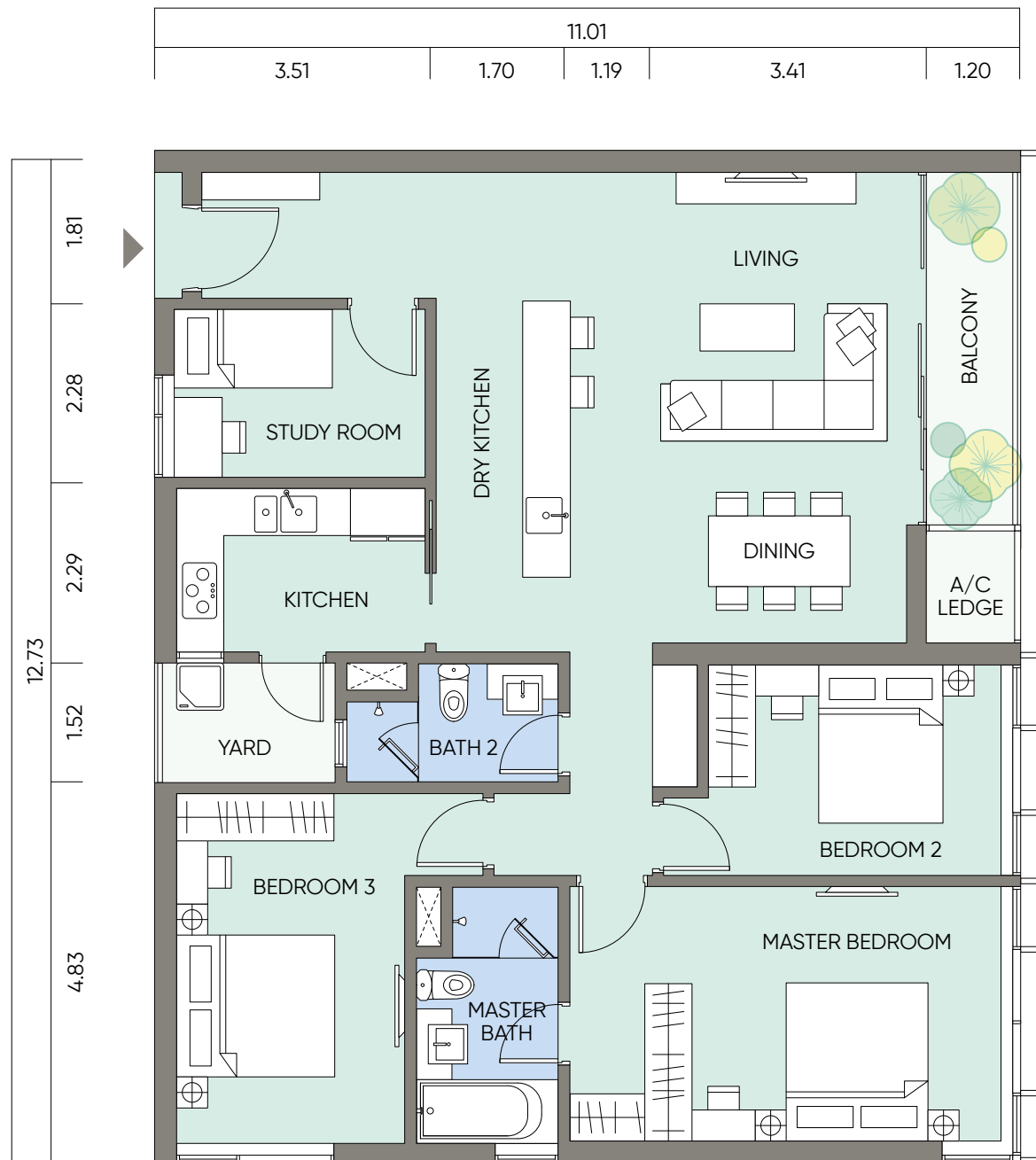
141.66 m<sup>2</sup>

**NET FLOOR AREA**

127.25 m<sup>2</sup>

**NO. OF UNIT**

25



Due to the windows sizes for different floor might be different for the same stack or unit type.  
 Windows in Master Bedroom & Bedroom 2: Level 5-15: 2.3m height, level 16-29: 1.8m height.  
 Dimensions and floor areas are subject to further revisions. All dimensions are expressed in meters unless specified otherwise.



TYPE

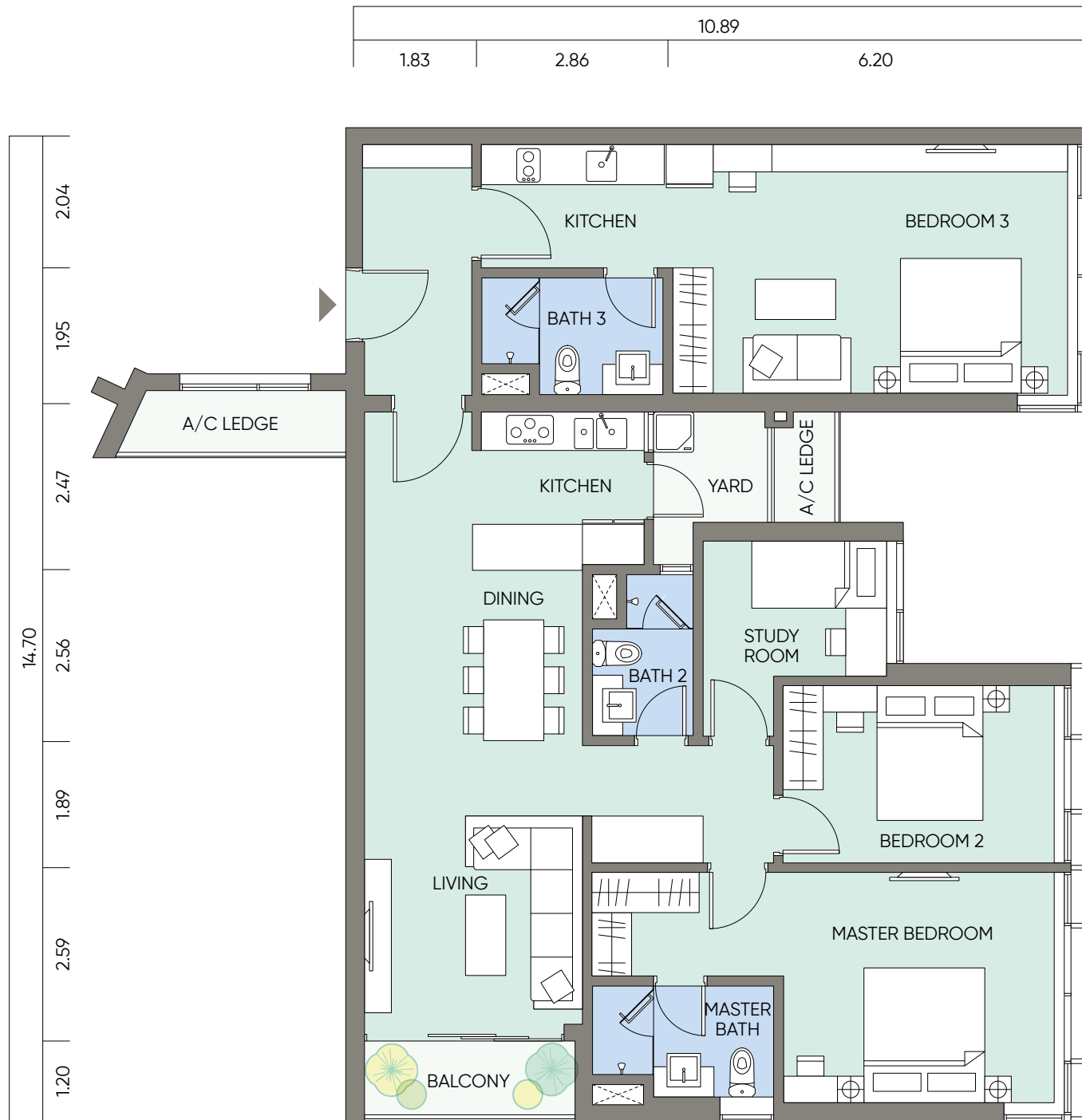
F

3 BEDROOMS + 1  
(DUAL KEY)





# / Type F



- 3 Bedrooms
- 3 Bathrooms
- 1 Study room

**TOTAL BUILT-UP AREA**

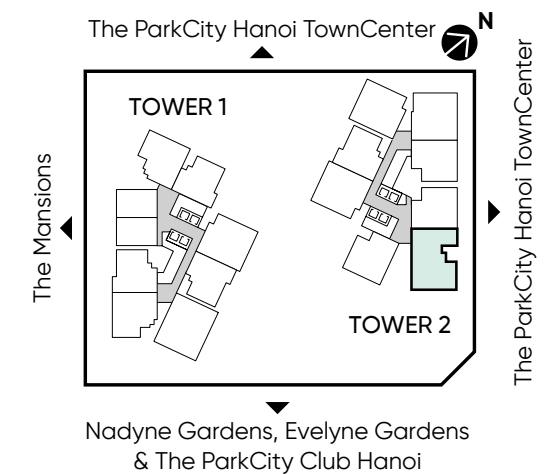
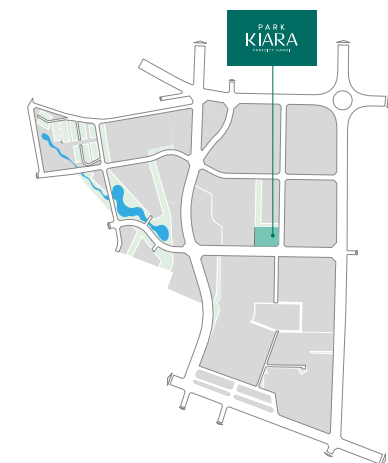
150.99 m<sup>2</sup>

**NET FLOOR AREA**

135.19 m<sup>2</sup>

**NO. OF UNIT**

24



Due to the windows sizes for different floor might be different for the same stack or unit type.  
 Windows in Master Bedroom, Bedroom 2 & Bedroom 3: Level 5-15: 2.3m height, level 16-29: 1.8m height.  
 Dimensions and floor areas are subject to further revisions. All dimensions are expressed in meters unless specified otherwise.



TYPE

G

3-4 BEDROOMS + 1  
(DUPLEX)

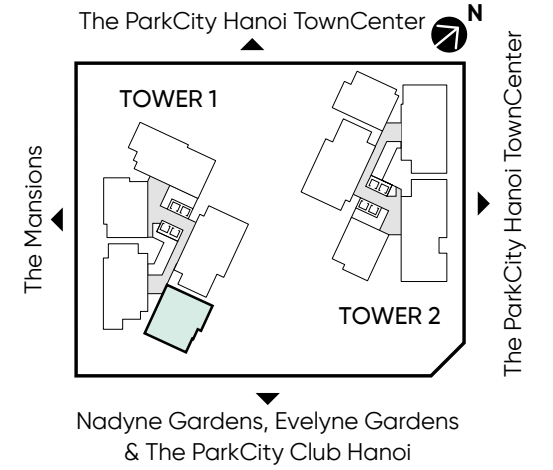
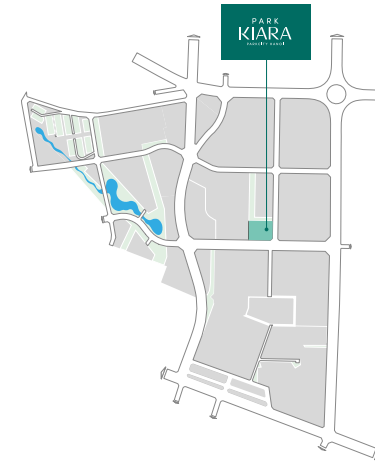




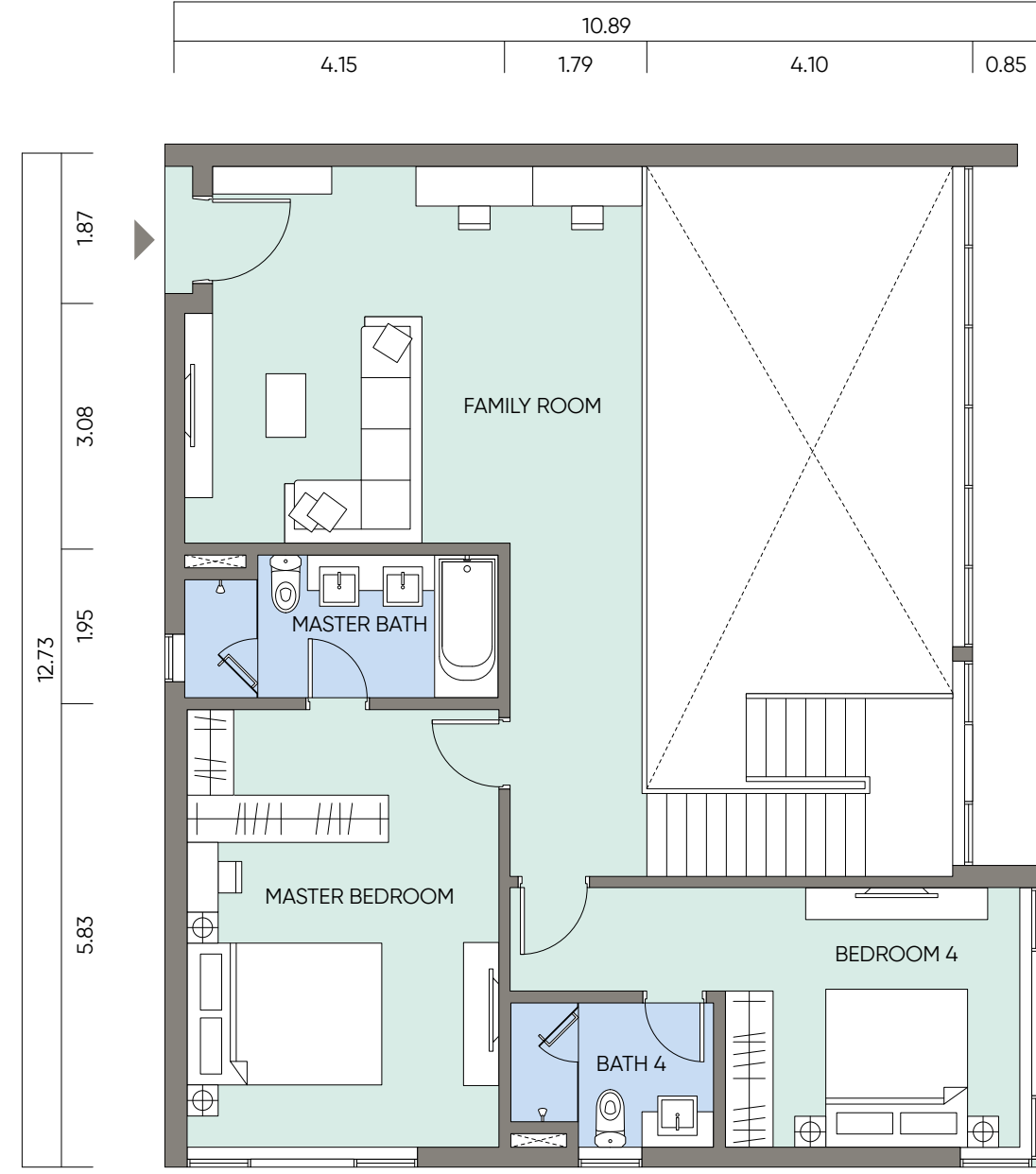
# Type G1

4 Bedrooms    1 Family room  
4 Bathrooms    1 Utility room

**TOTAL BUILT-UP AREA**  
255.74 m<sup>2</sup>  
**NET FLOOR AREA**  
229.03 m<sup>2</sup>  
**NO. OF UNIT**  
1



LOWER FLOOR



UPPER FLOOR

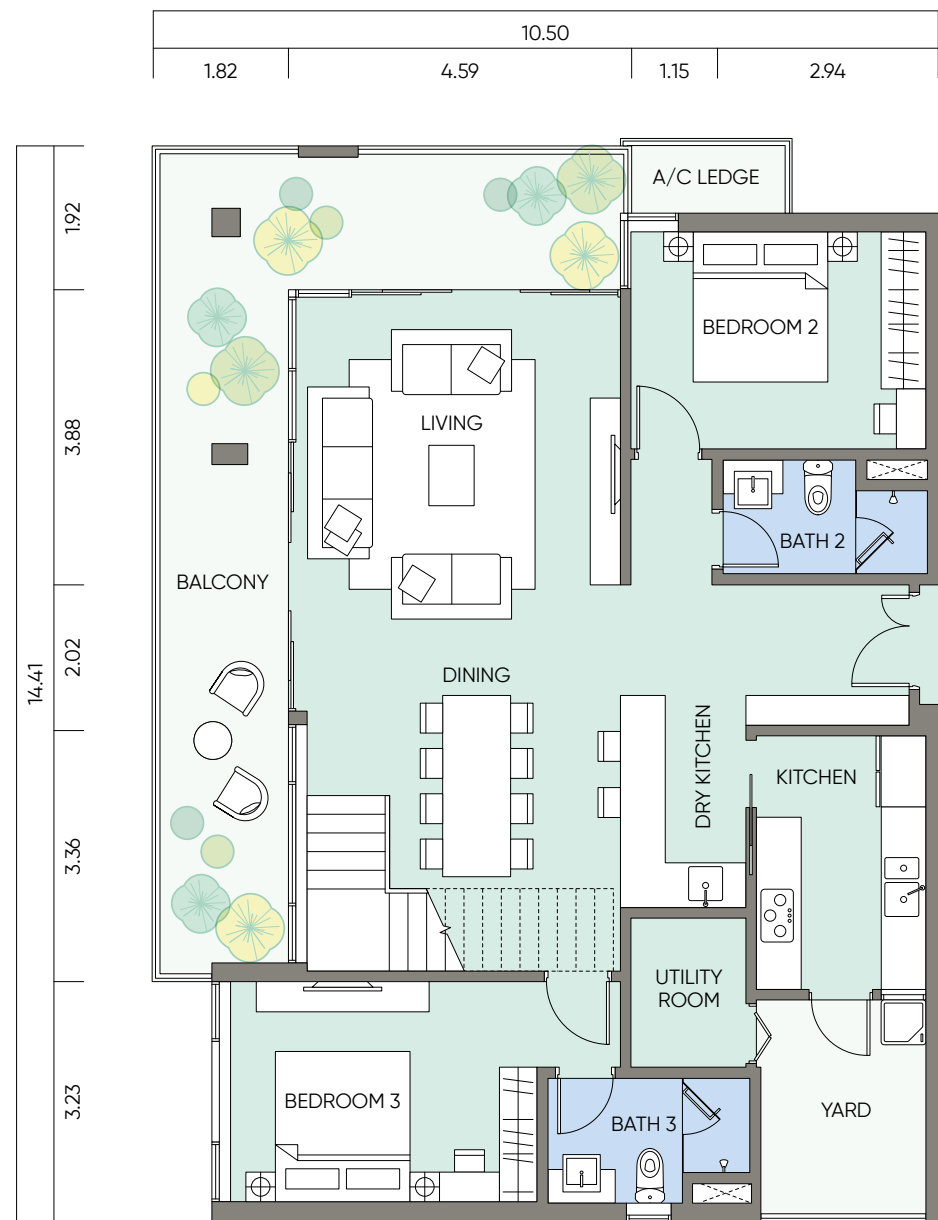
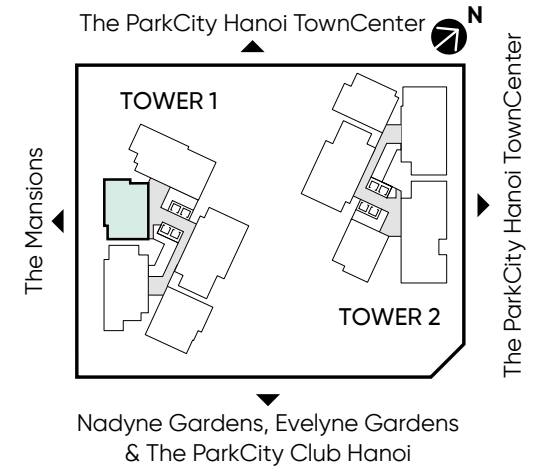
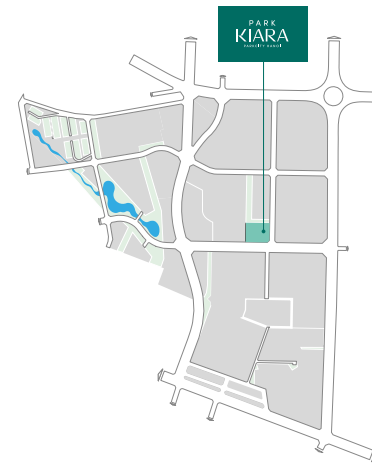
Dimensions and floor areas are subject to further revisions. All dimensions are expressed in meters unless specified otherwise.



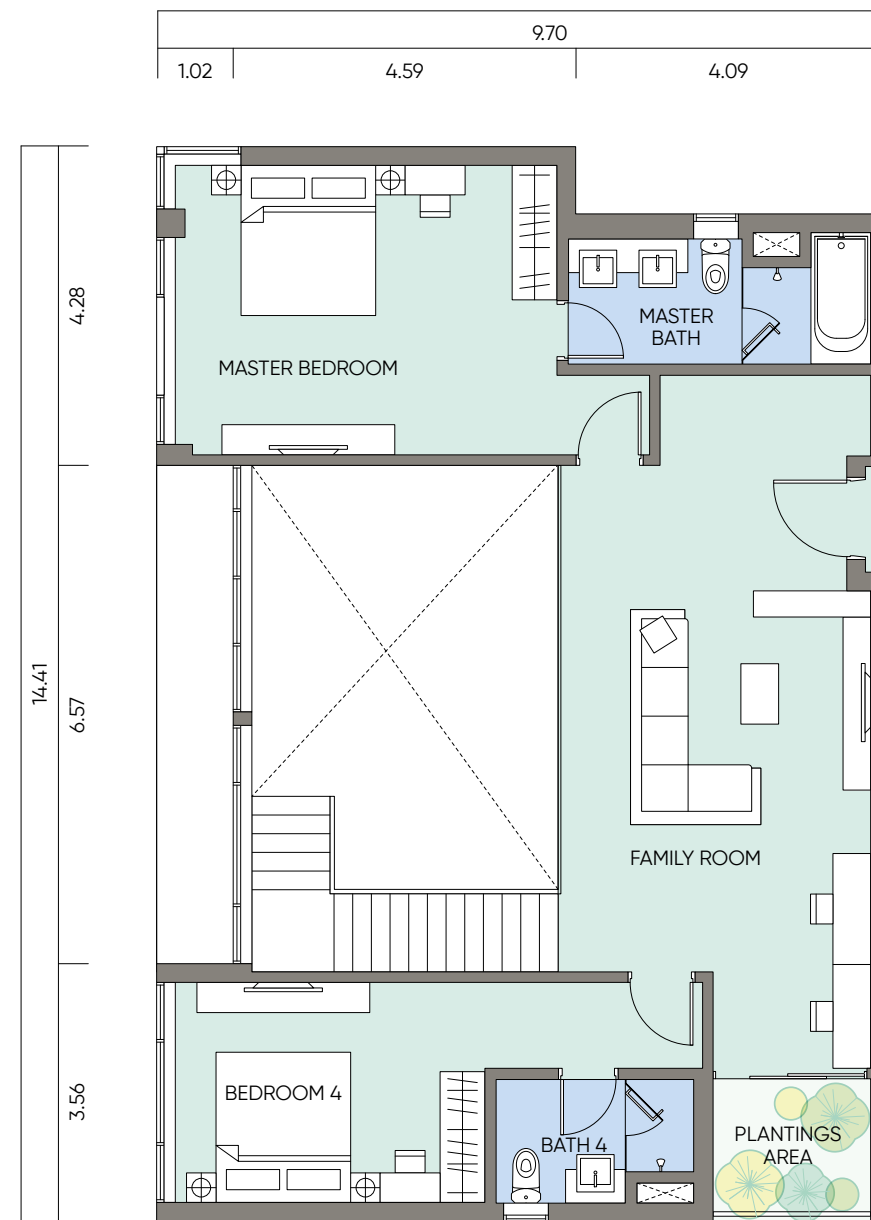
*Type G2*

4 Bedrooms    1 Family room  
4 Bathrooms    1 Utility room

**TOTAL BUILT-UP AREA**  
255.78 m<sup>2</sup>  
**NET FLOOR AREA**  
232.96 m<sup>2</sup>  
**NO. OF UNIT**  
1



LOWER FLOOR



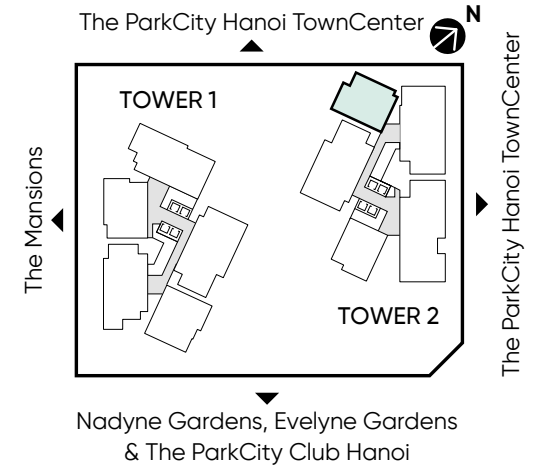
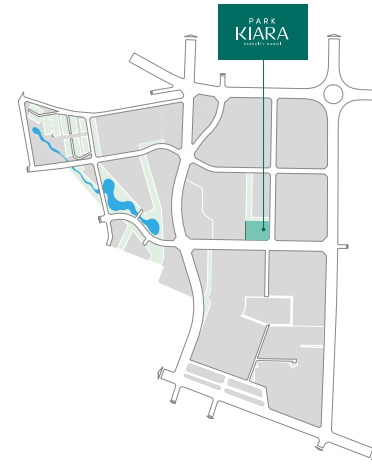
UPPER FLOOR

Dimensions and floor areas are subject to further revisions. All dimensions are expressed in meters unless specified otherwise.

# Type G3

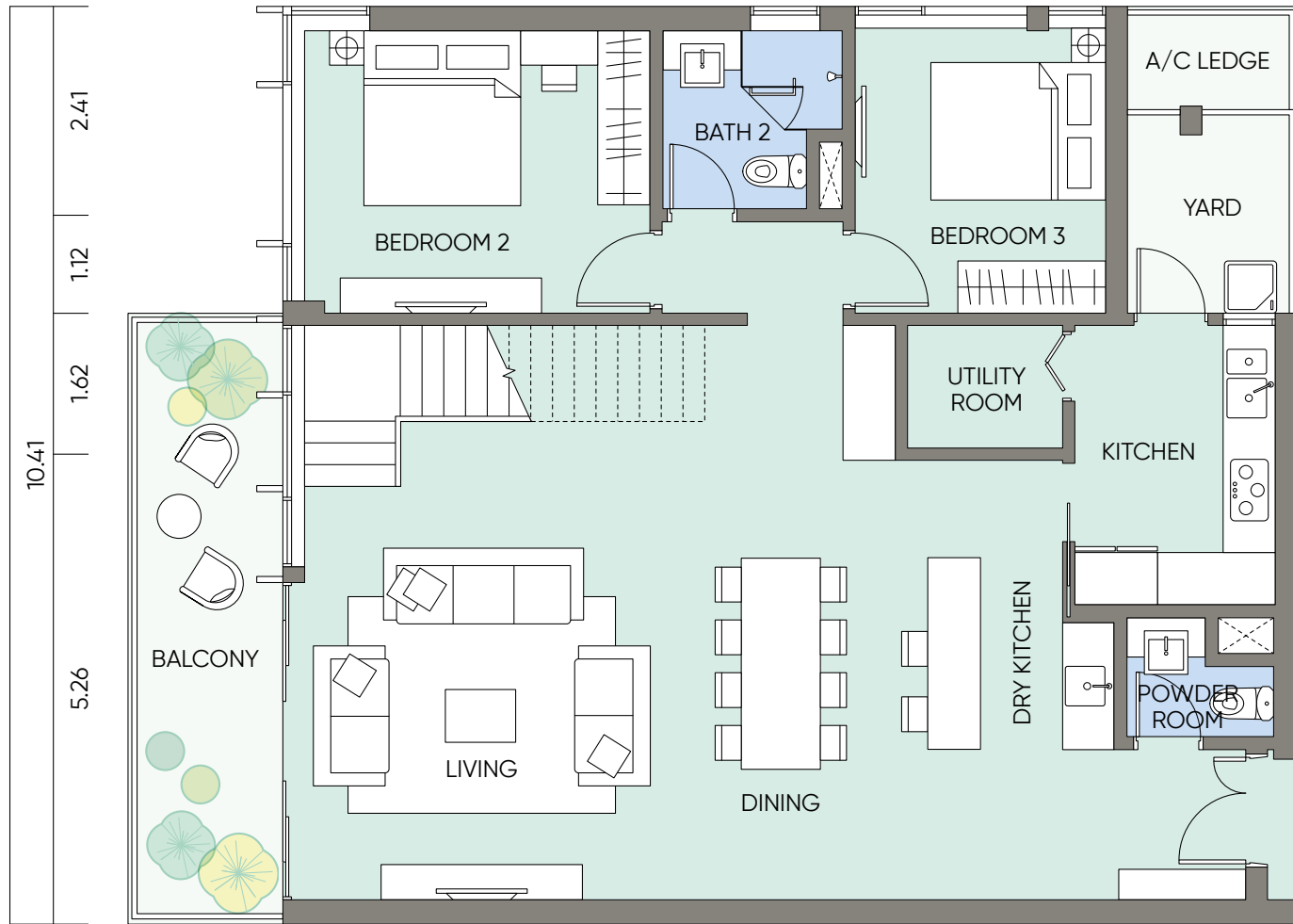
4 Bedrooms    1 Family room  
3 Bathrooms    1 Utility room  
1 Powder room

**TOTAL BUILT-UP AREA**  
231.32 m<sup>2</sup>  
**NET FLOOR AREA**  
208.31 m<sup>2</sup>  
**NO. OF UNIT**  
1

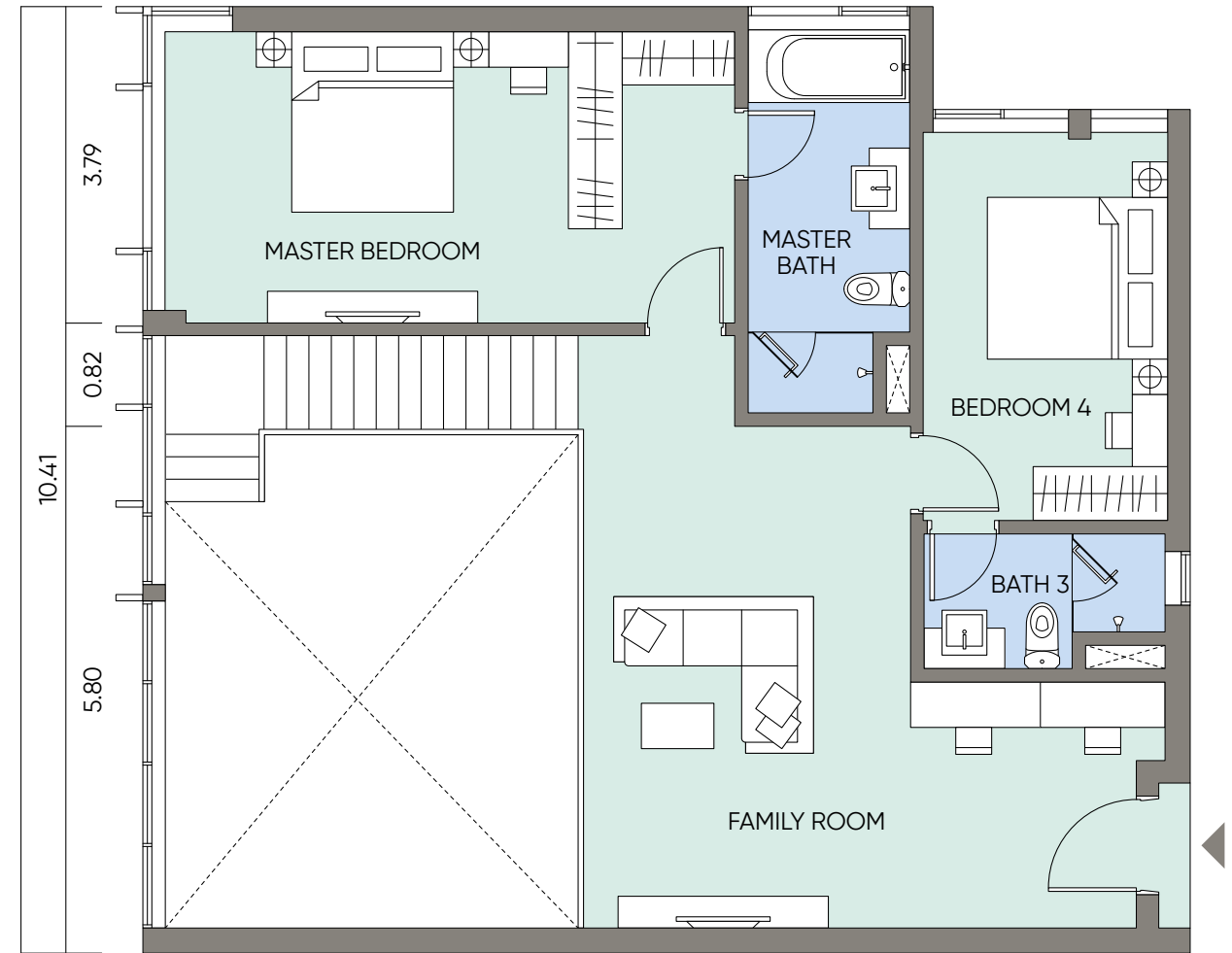


13.45					
1.78	4.29	2.22	3.20	0.87	1.09

11.67			
6.66	1.96	3.05	



LOWER FLOOR



UPPER FLOOR

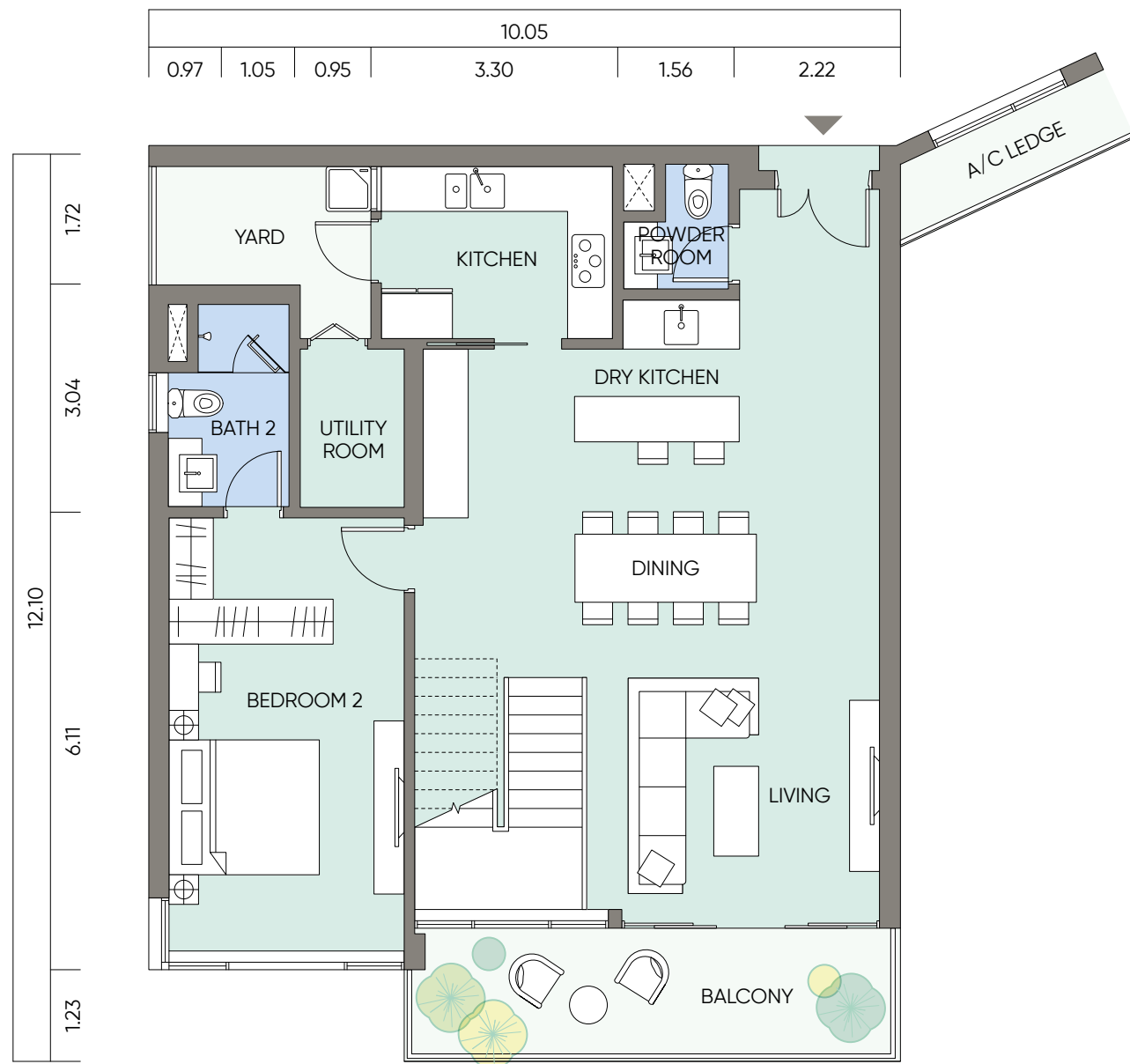
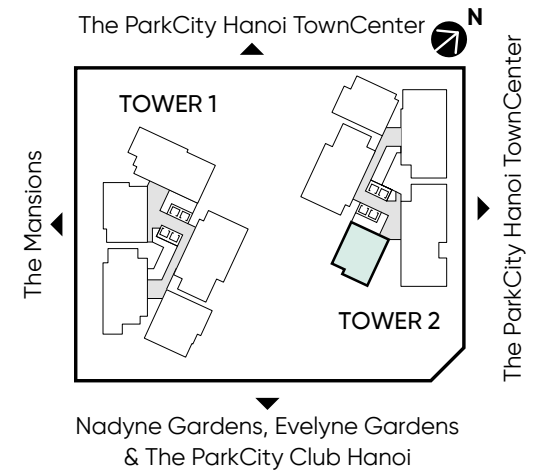
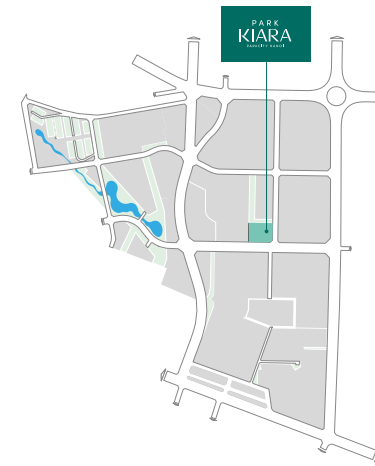
Dimensions and floor areas are subject to further revisions. All dimensions are expressed in meters unless specified otherwise.

**PARK  
KIARA**  
PARKCITY HANOI

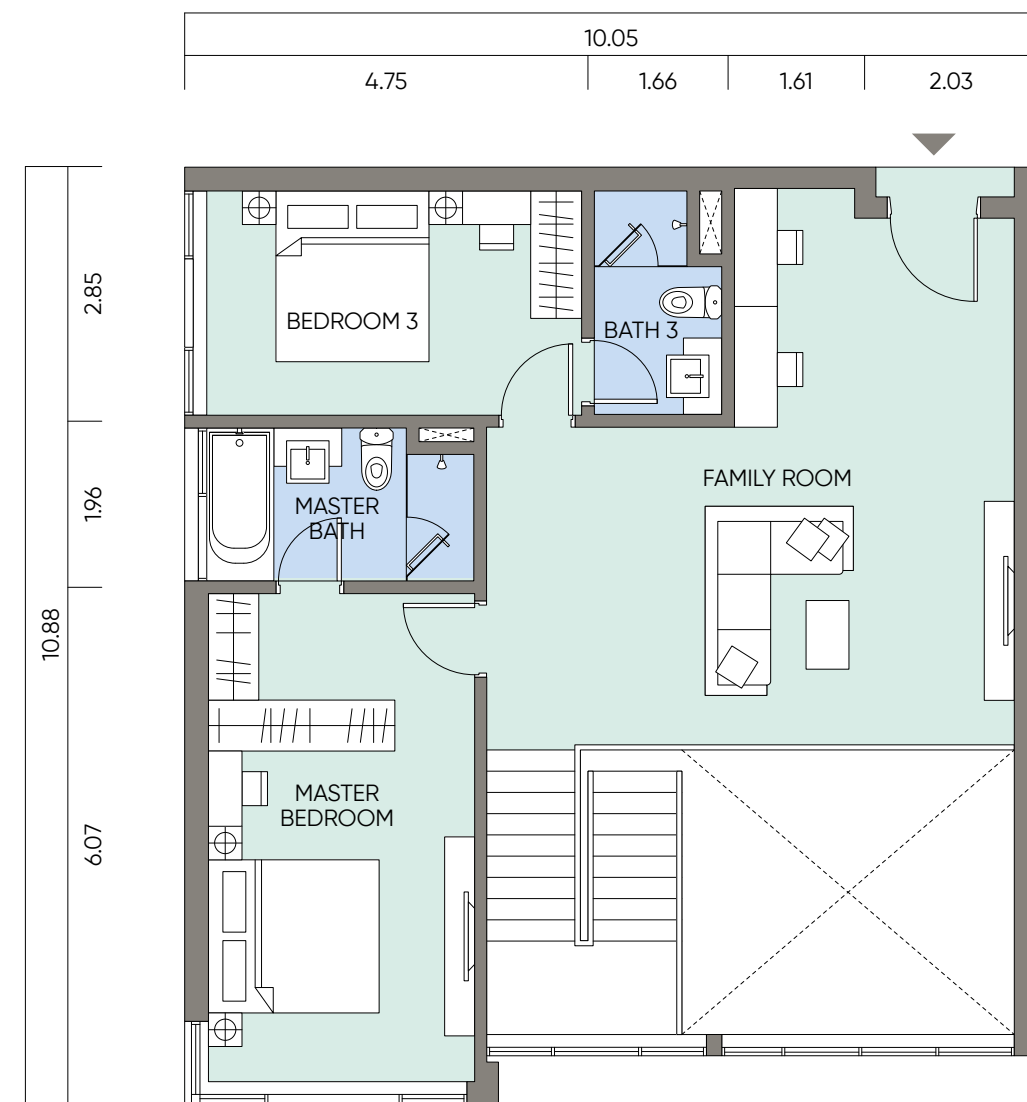
*Type G4*

3 Bedrooms    1 Family room  
3 Bathrooms    1 Utility room  
1 Powder room

**TOTAL BUILT-UP AREA**  
210.57 m<sup>2</sup>  
**NET FLOOR AREA**  
191.34 m<sup>2</sup>  
**NO. OF UNIT**  
1



**LOWER FLOOR**



**UPPER FLOOR**

*Dimensions and floor areas are subject to further revisions. All dimensions are expressed in meters unless specified otherwise.*



TYPE

H

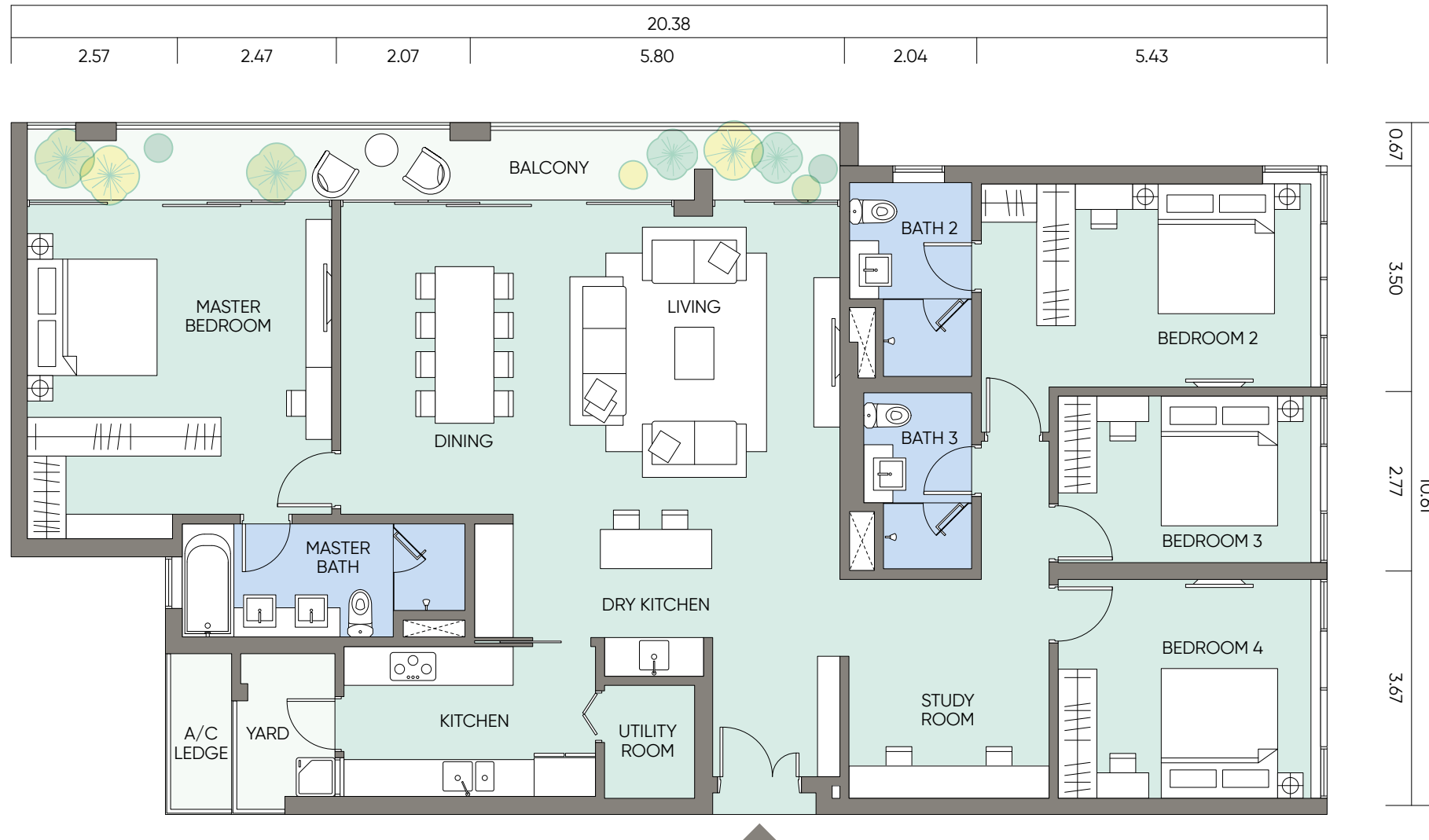
4 BEDROOMS + 1  
(PENTHOUSE)





# / Type H1

- 4 Bedrooms
- 3 Bathrooms
- 1 Study room
- 1 Utility room



**TOTAL BUILT-UP AREA**

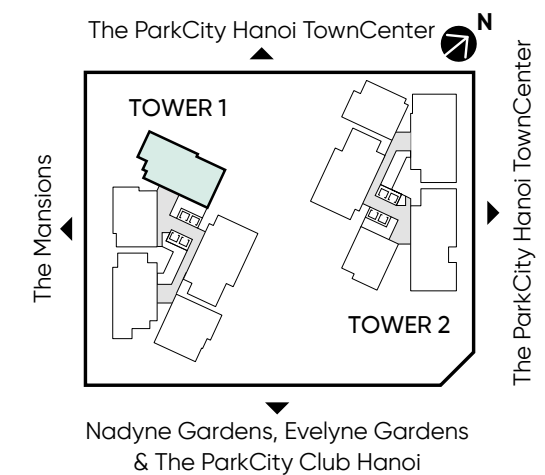
202.62 m<sup>2</sup>

**NET FLOOR AREA**

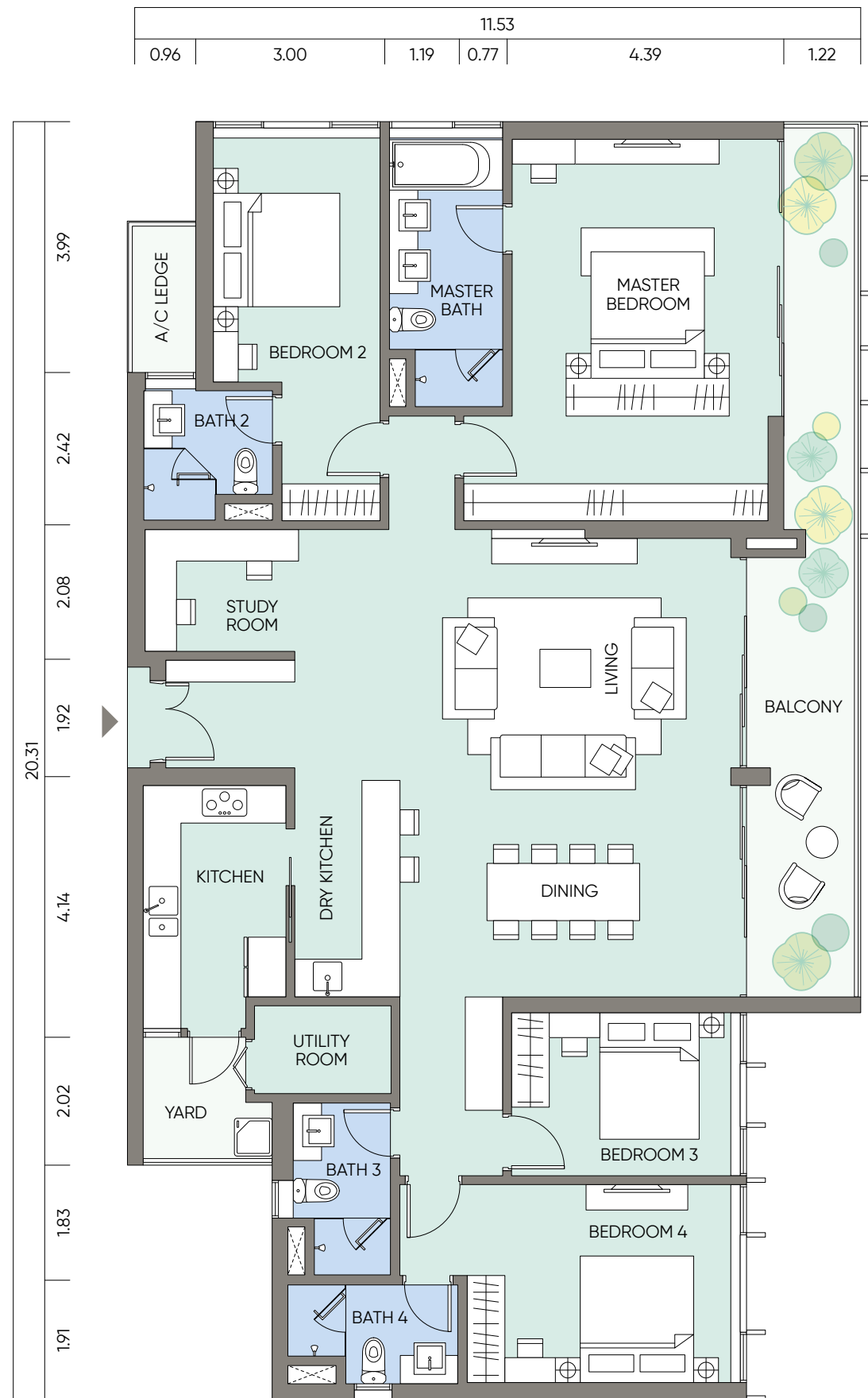
184.35 m<sup>2</sup>

**NO. OF UNIT**

2



Dimensions and floor areas are subject to further revisions. All dimensions are expressed in meters unless specified otherwise.



# / Type H2

- 4 Bedrooms
- 4 Bathrooms
- 1 Study room
- 1 Utility room

**TOTAL BUILT-UP AREA**

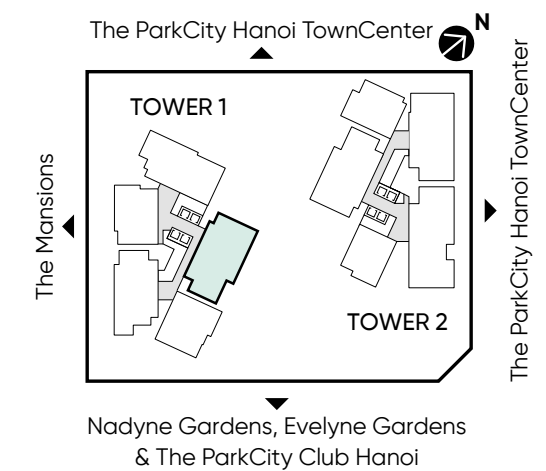
214.19 m<sup>2</sup>

**NET FLOOR AREA**

195.13 m<sup>2</sup>

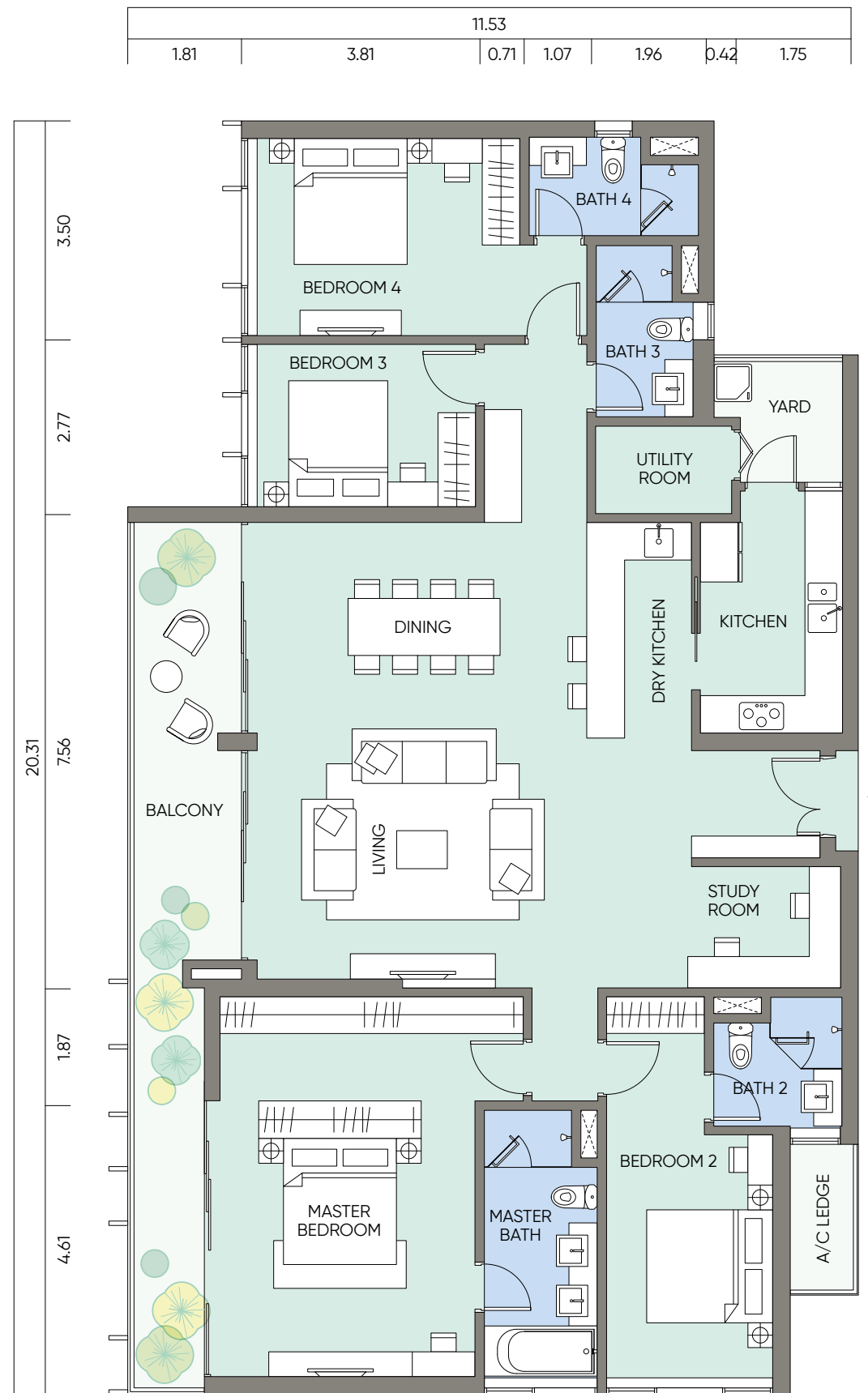
**NO. OF UNIT**

2



Dimensions and floor areas are subject to further revisions. All dimensions are expressed in meters unless specified otherwise.





# Type H2

- 4 Bedrooms
- 4 Bathrooms
- 1 Study room
- 1 Utility room

**TOTAL BUILT-UP AREA**

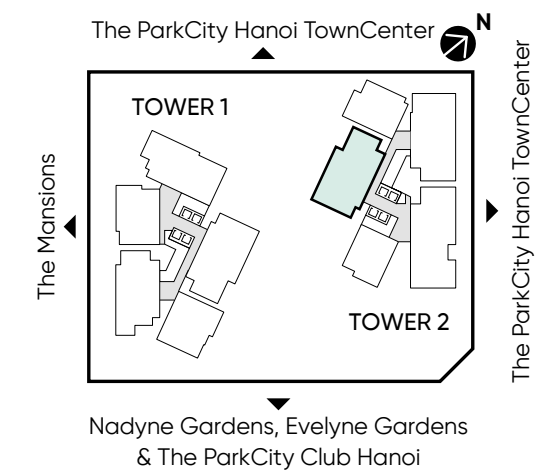
214.19 m<sup>2</sup>

**NET FLOOR AREA**

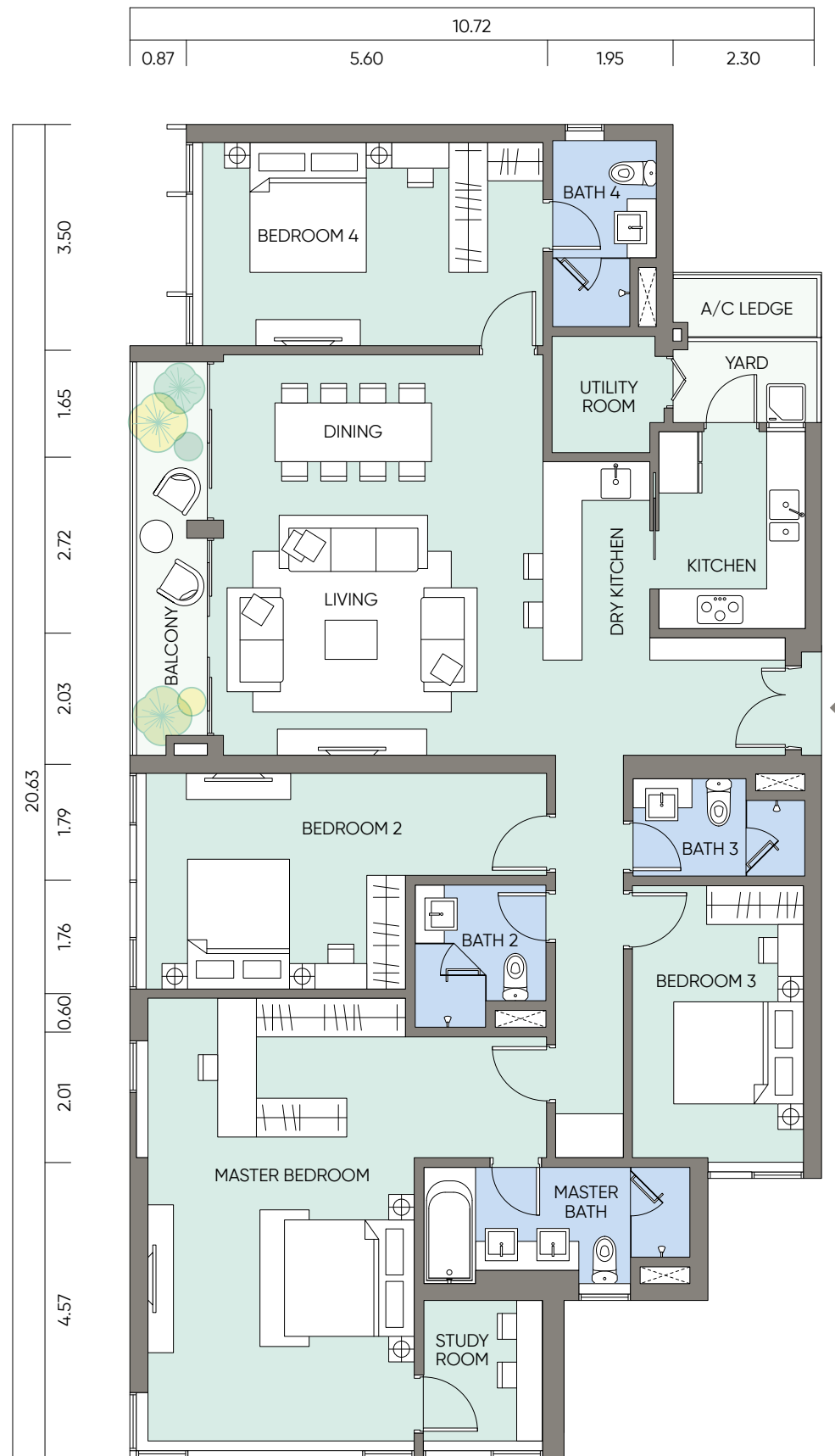
195.13 m<sup>2</sup>

**NO. OF UNIT**

2



Dimensions and floor areas are subject to further revisions. All dimensions are expressed in meters unless specified otherwise.



# Type H3

- 4 Bedrooms
- 4 Bathrooms
- 1 Study room
- 1 Utility room

**TOTAL BUILT-UP AREA**

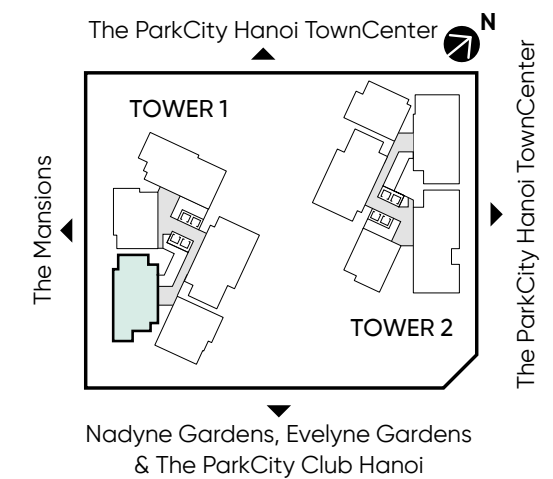
199.06 m<sup>2</sup>

**NET FLOOR AREA**

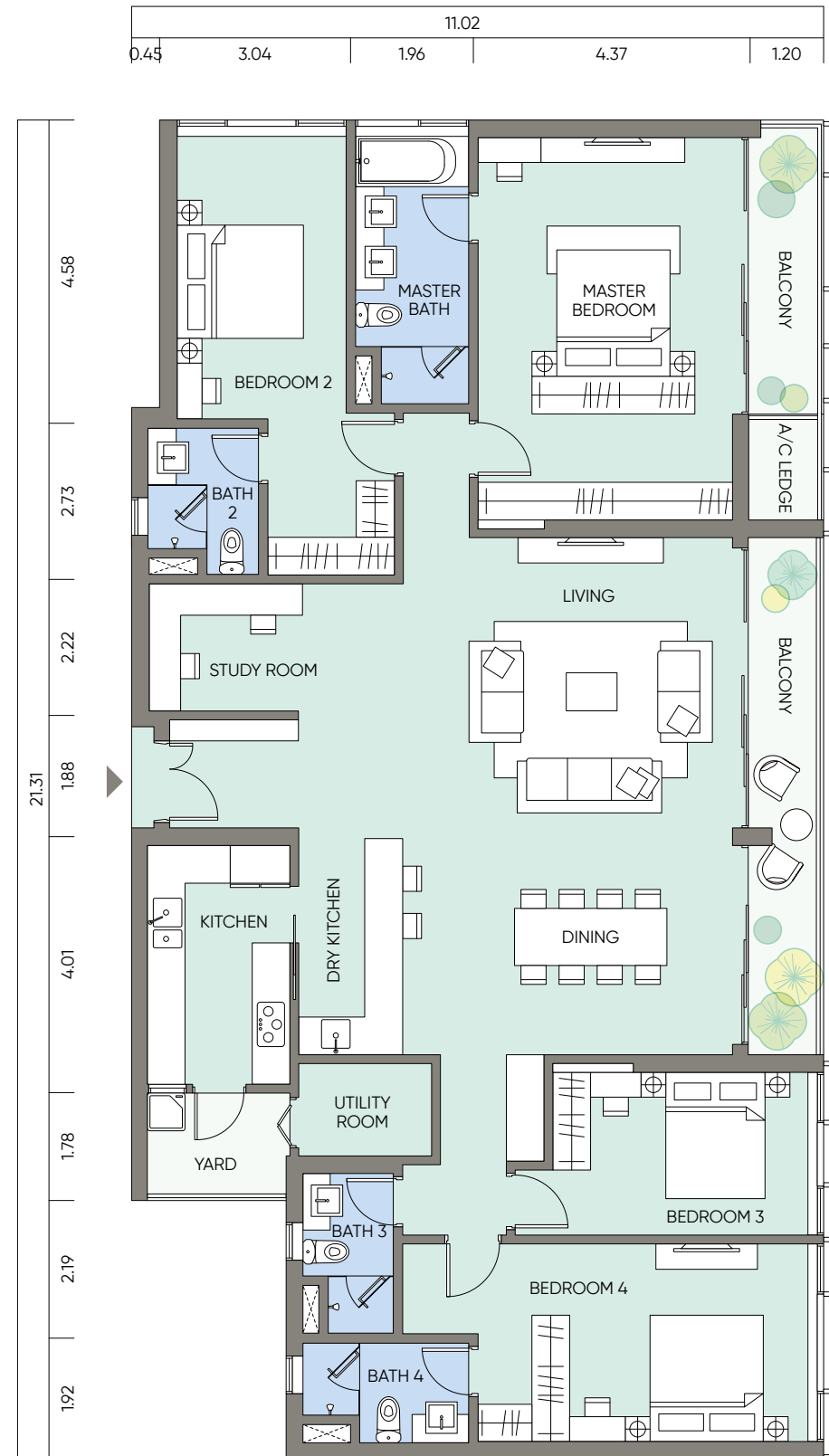
180.86 m<sup>2</sup>

**NO. OF UNIT**

2



Dimensions and floor areas are subject to further revisions. All dimensions are expressed in meters unless specified otherwise.



# Type H4

- 4 Bedrooms
- 4 Bathrooms
- 1 Study room
- 1 Utility room

**TOTAL BUILT-UP AREA**

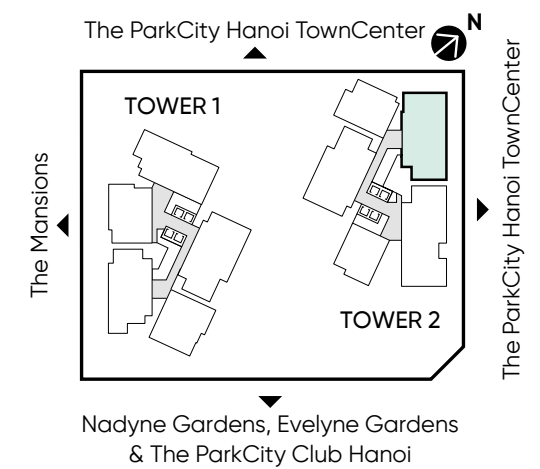
221.62 m<sup>2</sup>

**NET FLOOR AREA**

202.01 m<sup>2</sup>

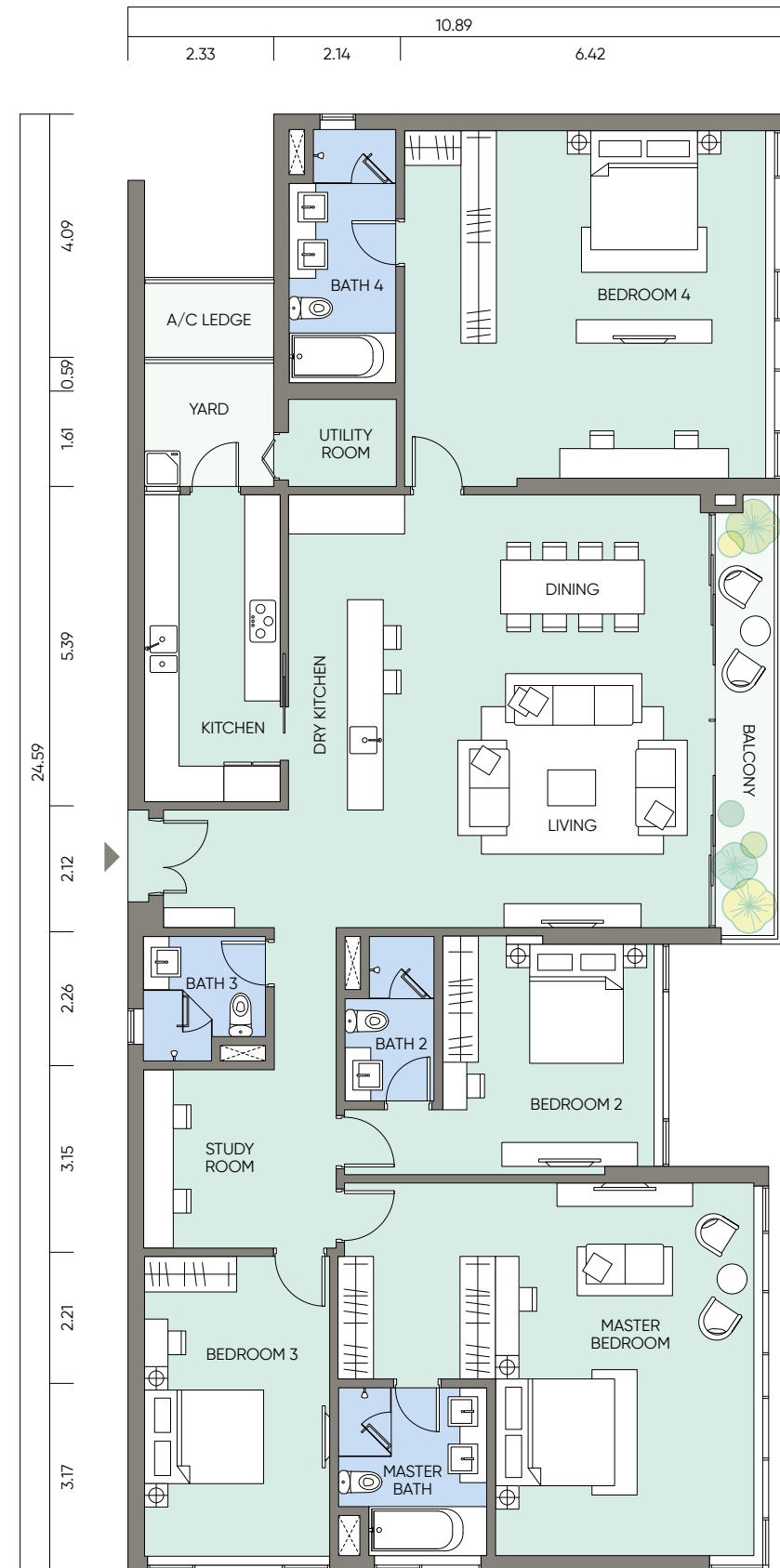
**NO. OF UNIT**

2



Dimensions and floor areas are subject to further revisions. All dimensions are expressed in meters unless specified otherwise.





# Type H5

- 4 Bedrooms
- 4 Bathrooms
- 1 Study room
- 1 Utility room

**TOTAL BUILT-UP AREA**

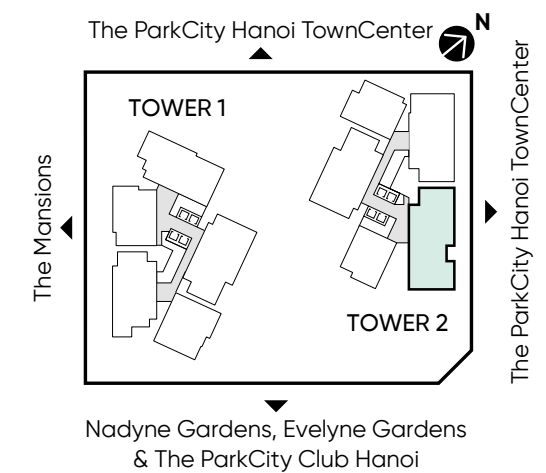
254.44 m<sup>2</sup>

**NET FLOOR AREA**

232.61 m<sup>2</sup>

**NO. OF UNIT**

2



Dimensions and floor areas are subject to further revisions. All dimensions are expressed in meters unless specified otherwise.